

APP CRS 354°	Rwy Idg 4073
	TDZE 2601
	Apt Elev 2601

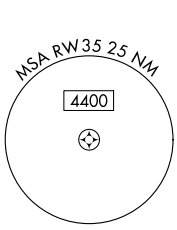
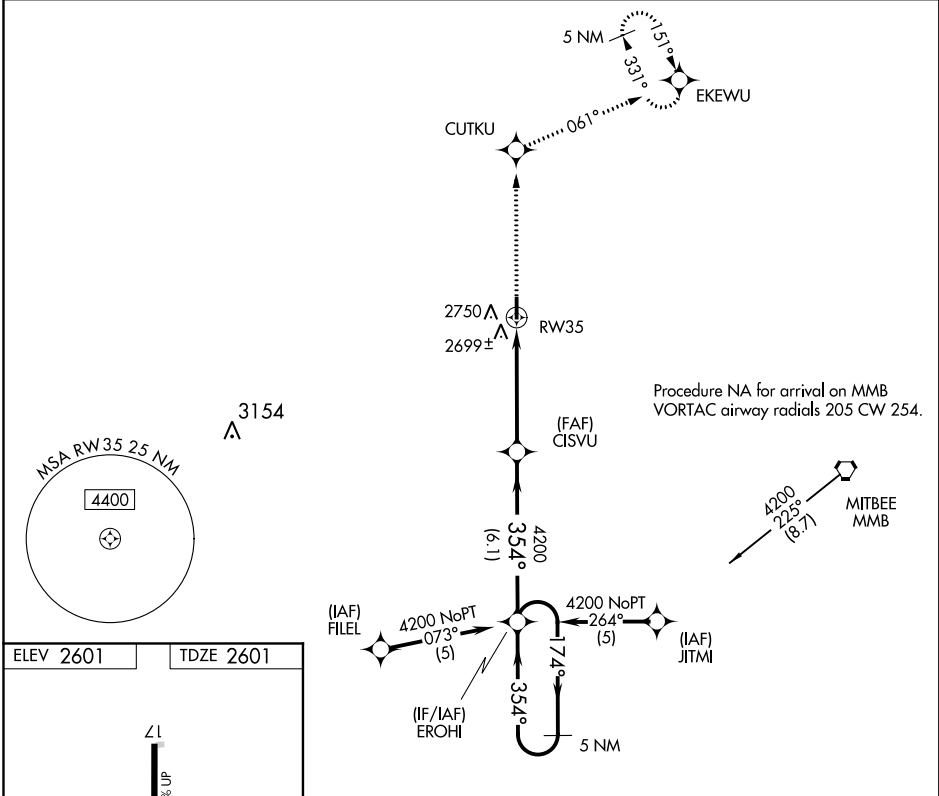
RNAV (GPS) RWY 35

FOLLETT/LIPSCOMB COUNTY (T93)

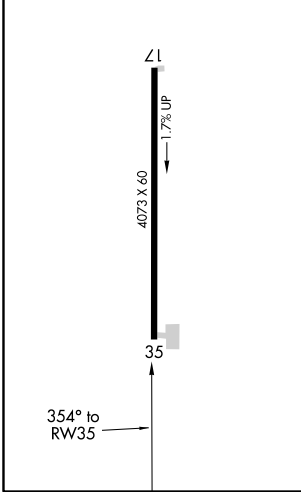
RNP APCH.
 ▼ Use Gage, OK altimeter setting, when not received use
 ▲ NA Perryton, TX altimeter setting and increase all MDA 20 feet.

MISSED APPROACH: Climb to 6000 direct CUTKU and on track 061° to EKEWU and hold, continue climb-in-hold to 6000.

KANSAS CITY CENTER 126.95 379.2	CTAF 122.9
---	----------------------



ELEV 2601	TDZE 2601
-----------	-----------



6000	CUTKU	EKEWU	5 NM Holding Pattern	
↑	tr 061°		CISVU	EROHI
RW35		354°	354°	174°
4.8 NM		4200	6.1 NM	4200
CATEGORY	A	B	C	D
LNAV MDA	3100-1	499 (500-1)	NA	
CIRCLING	3160-1	559 (600-1)	NA	

SC-2, 09 SEP 2021 to 07 OCT 2021

SC-2, 09 SEP 2021 to 07 OCT 2021