

VOR/DME INA	APP CRS	Rwy Idg	7000
108.2	146°	TDZE	4304
Chan 19		Apt Elev	4308

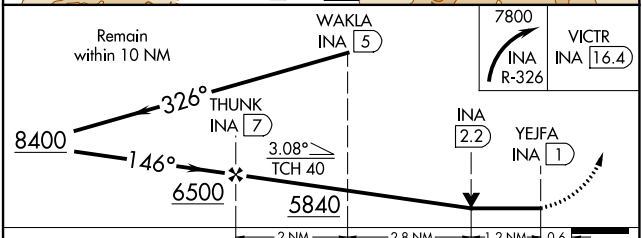
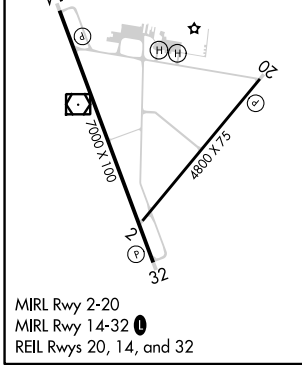
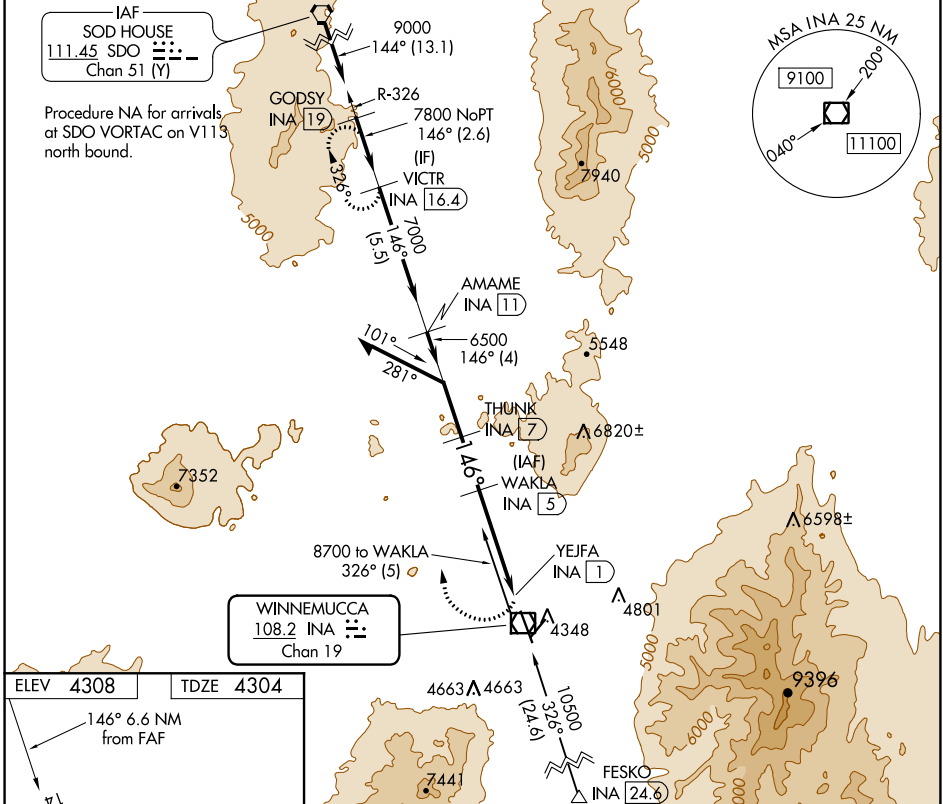
VOR RWY 14

WINNEMUCCA MUNI (WMC)

DME required.

MISSED APPROACH: Climbing right turn to 7800 on INA VOR/DME R-326 to VICTR/INA 16.4 DME and hold.

ASOS 120.175	SALT LAKE CITY CENTER 132.25 338.35	UNICOM 122.8 (CTAF) 0
------------------------	---	---------------------------------



CATEGORY	A	B	C	D
S-14	4940-1	636 (700-1)	4940-1 ³ / ₄ 636 (700-1 ³ / ₄)	NA
C CIRCLING	4940-1	632 (700-1)	5280-3 972 (1000-3)	NA

SW-4, 09 SEP 2021 to 07 OCT 2021

SW-4, 09 SEP 2021 to 07 OCT 2021