

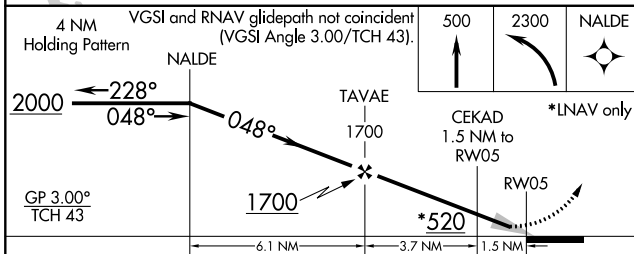
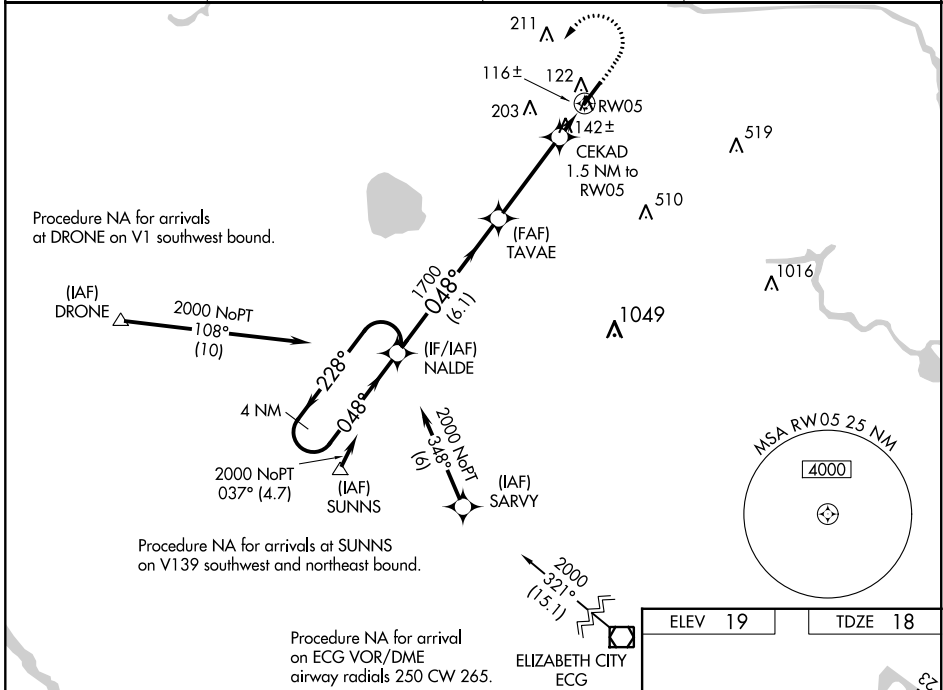
WAAS CH <b>78222</b> <b>W05A</b>	APP CRS <b>048°</b>	Rwy Idg TDZE Apt Elev	<b>5500</b> <b>18</b> <b>19</b>
--	------------------------	-----------------------------	---------------------------------------

# RNAV (GPS) RWY 5

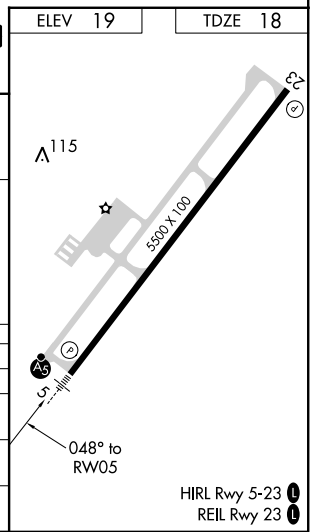
CHESAPEAKE RGNL (CPK)

RNP APCH.	MALSRL	MISSED APPROACH: Climb to 500 then climbing left turn to 2300 direct NALDE and hold.
<p>When local altimeter setting not received, use Norfolk Intl altimeter setting and increase all DA 36 feet and all MDA 40 feet; increase LNAV Cats C and D visibility 1/8 mile. Baro-VNAV NA when using Norfolk Intl altimeter setting. For uncompensated Baro-VNAV systems, LNAV/VNAV NA below -15°C (5°F) or above 43°C (109°F). For inoperative MALSRL, increase LNAV/VNAV all Cats visibility to 1/8 mile.</p>		

AWOS-3 <b>123.675</b>	NORFOLK APP CON <b>118.9 353.7</b>	GCO <b>135.075</b>	UNICOM <b>123.075 (CTAF) 0</b>
--------------------------	---------------------------------------	-----------------------	-----------------------------------



CATEGORY	A	B	C	D
LPV DA		218-1/2	200 (200-1/2)	
LNAV/VNAV DA		278-1/2	260 (300-1/2)	
LNAV MDA	400-1/2	382 (400-1/2)	400-5/8	382 (400-5/8)
CIRCLING	460-1	480-1	480-1 1/2	580-2
	441 (500-1)	461 (500-1)	461 (500-1 1/2)	561 (600-2)



NE-3, 09 SEP 2021 to 07 OCT 2021

NE-3, 09 SEP 2021 to 07 OCT 2021