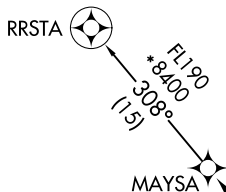


(MAYSA7.MAYSA) 20142

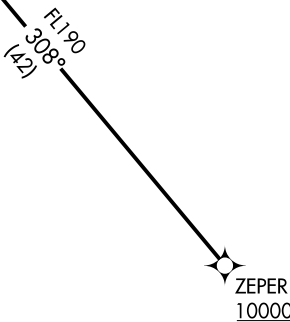
MAYSA SEVEN DEPARTURE (RNAV) AL-6494 (FAA)

CHANDLER MUNI (CHD)  
CHANDLER, ARIZONA



**TOP ALTITUDE:  
ASSIGNED BY ATC**

ATIS 128.325  
 GND CON 124.4  
 CHANDLER TOWER \* 124.4  
 126.1 (Rwy 4L-22R)  
 133.1 (Rwy 4R-22L)  
 PHOENIX DEP CON 123.7 363.0



TAKEOFF MINIMUMS

Rwys 4L/R, 22L/R: Standard.

NOTE: RNAV 1.

NOTE: Turbojets and turboprops only.

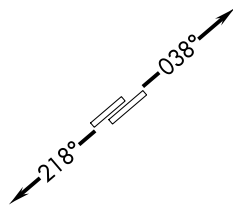
NOTE: RADAR required.

NOTE: GPS required.

NOTE: Aircraft departing KGEU and KGYR ATC assigned only.

Do not file.

ZEPER  
10000



NOTE: Chart not to scale.



DEPARTURE ROUTE DESCRIPTION

TAKEOFF RUNWAYS 4L/R: Climb on heading 038° or as assigned by ATC. Thence. . .

TAKEOFF RUNWAYS 22L/R: Climb on heading 218° or as assigned by ATC. Thence. . .

. . . expect RADAR vectors to cross ZEPER at or above 10000, then on track 308° to MAYSA, then on RRSTA TRANSITION. Maintain ATC assigned altitude, expect filed altitude 3 minutes after departure.

RRSTA TRANSITION (MAYSA7.RRSTA)

MAYSA SEVEN DEPARTURE (RNAV)  
(MAYSA7.MAYSA) 21MAY20

CHANDLER, ARIZONA  
CHANDLER MUNI (CHD)

SW-4, 09 SEP 2021 to 07 OCT 2021

SW-4, 09 SEP 2021 to 07 OCT 2021