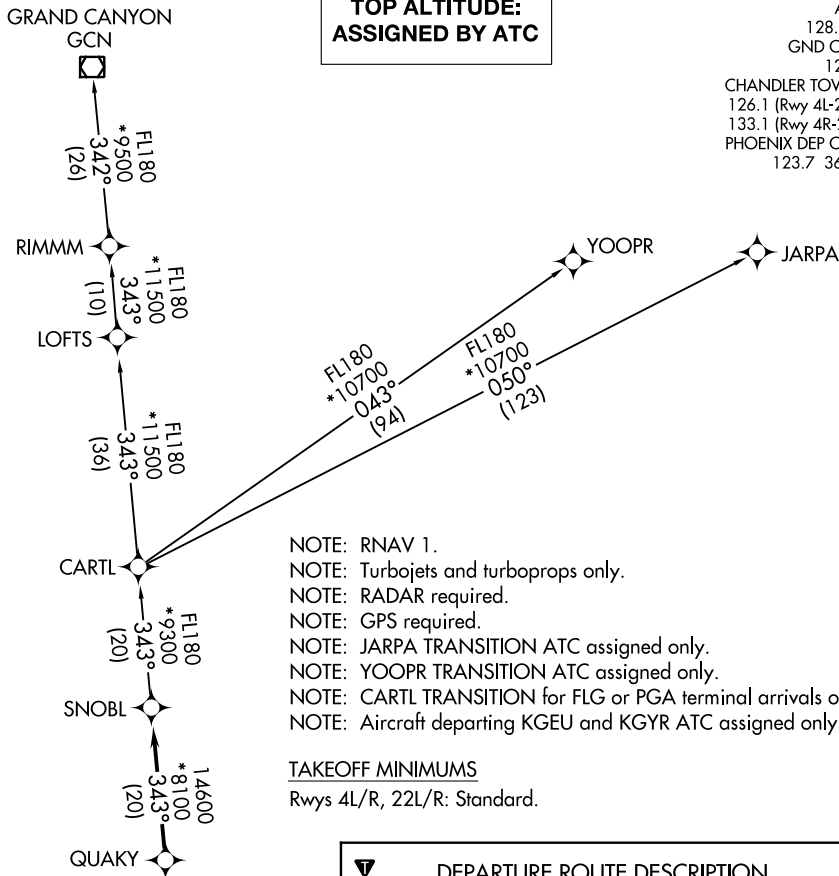


**TOP ALTITUDE:  
ASSIGNED BY ATC**

ATIS  
128.325  
GND CON  
124.4  
CHANDLER TOWER \*  
126.1 (Rwy 4L-22R)  
133.1 (Rwy 4R-22L)  
PHOENIX DEP CON  
123.7 363.0



- NOTE: RNAV 1.
- NOTE: Turbojets and turboprops only.
- NOTE: RADAR required.
- NOTE: GPS required.
- NOTE: JARPA TRANSITION ATC assigned only.
- NOTE: YOOPR TRANSITION ATC assigned only.
- NOTE: CARTL TRANSITION for FLG or PGA terminal arrivals only.
- NOTE: Aircraft departing KGEU and KGYR ATC assigned only.

TAKEOFF MINIMUMS  
Rwys 4L/R, 22L/R: Standard.

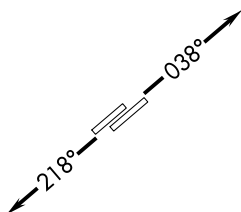
**DEPARTURE ROUTE DESCRIPTION**

TAKEOFF RUNWAYS 4L/R: Climb heading 038° or as assigned by ATC, thence. . . .

TAKEOFF RUNWAYS 22L/R: Climb heading 218° or as assigned by ATC, thence. . . .

. . . .expect RADAR vectors to QUAKY, then on track 343° to SNOBL, then on (transition). Maintain ATC assigned altitude, expect filed altitude 3 minutes after departure.

- CARTL TRANSITION (SNOBL6.CARTL)
- GRAND CANYON TRANSITION (SNOBL6.GCN)
- JARPA TRANSITION (SNOBL6.JARPA)
- RIMMM TRANSITION (SNOBL6.RIMMM)
- YOOPR TRANSITION (SNOBL6.YOOPR)



NOTE: Chart not to scale.

SW-4, 09 SEP 2021 to 07 OCT 2021

SW-4, 09 SEP 2021 to 07 OCT 2021