

(OYODA2.OYODA) 21168

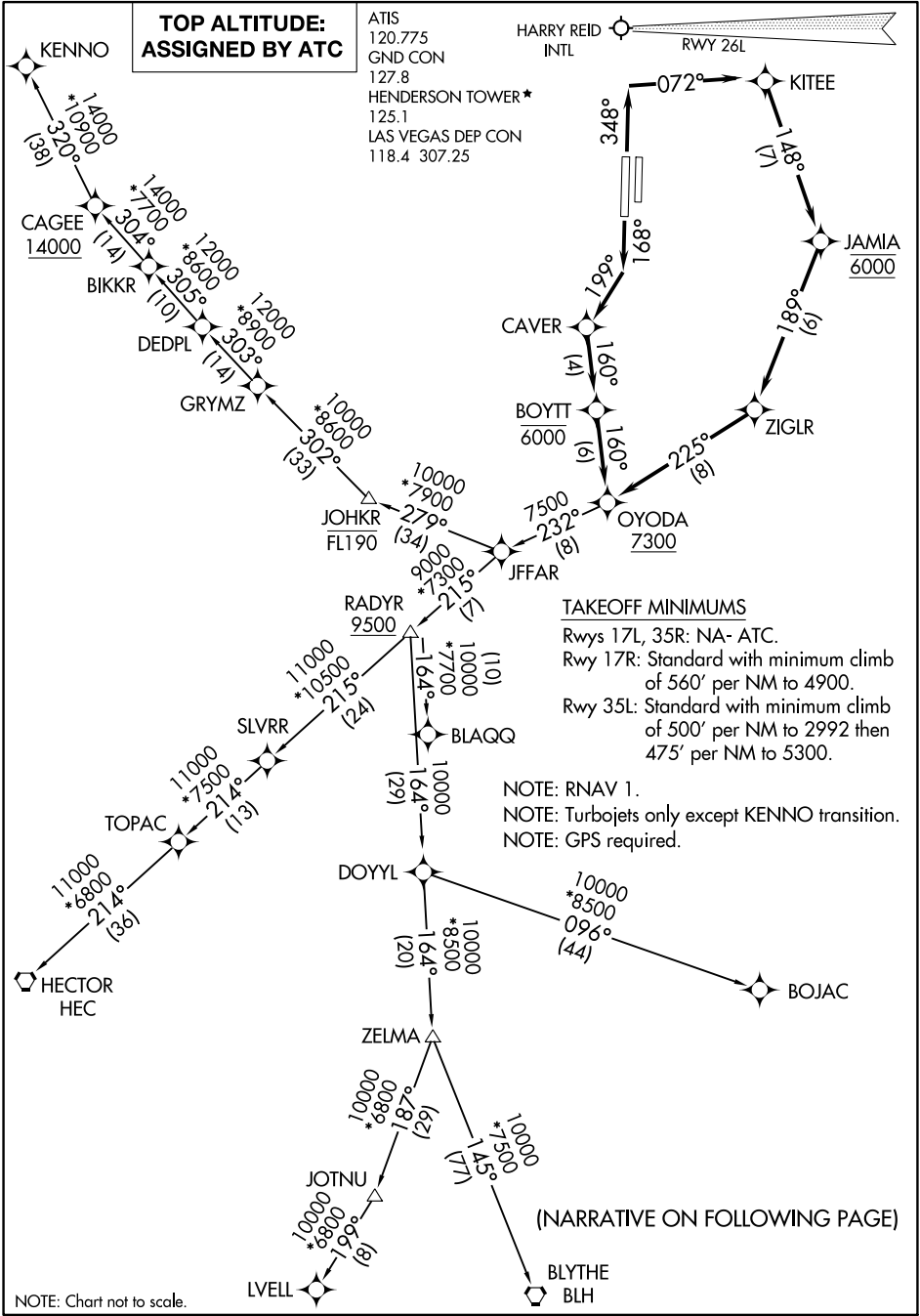
# OYODA TWO DEPARTURE (RNAV)

AL-6514 (FAA)

HENDERSON EXEC (HND)  
LAS VEGAS, NEVADA

**TOP ALTITUDE:  
ASSIGNED BY ATC**

ATIS  
120.775  
GND CON  
127.8  
HENDERSON TOWER\*  
125.1  
LAS VEGAS DEP CON  
118.4 307.25



**TAKEOFF MINIMUMS**  
Rwys 17L, 35R: NA- ATC.  
Rwy 17R: Standard with minimum climb of 560' per NM to 4900.  
Rwy 35L: Standard with minimum climb of 500' per NM to 2992 then 475' per NM to 5300.

NOTE: RNAV 1.  
NOTE: Turbojets only except KENNO transition.  
NOTE: GPS required.

(NARRATIVE ON FOLLOWING PAGE)

NOTE: Chart not to scale.

SW-4, 09 SEP 2021 to 07 OCT 2021

SW-4, 09 SEP 2021 to 07 OCT 2021

# OYODA TWO DEPARTURE (RNAV)

(OYODA2.OYODA) 22APR21

LAS VEGAS, NEVADA  
HENDERSON EXEC (HND)