

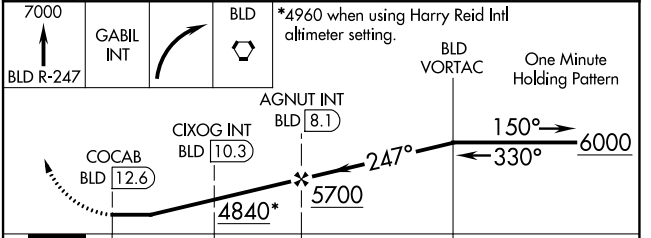
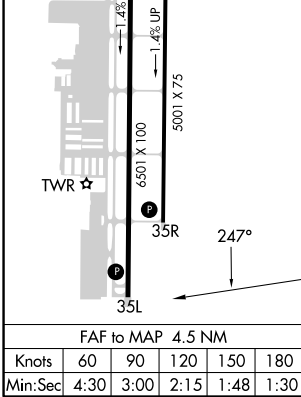
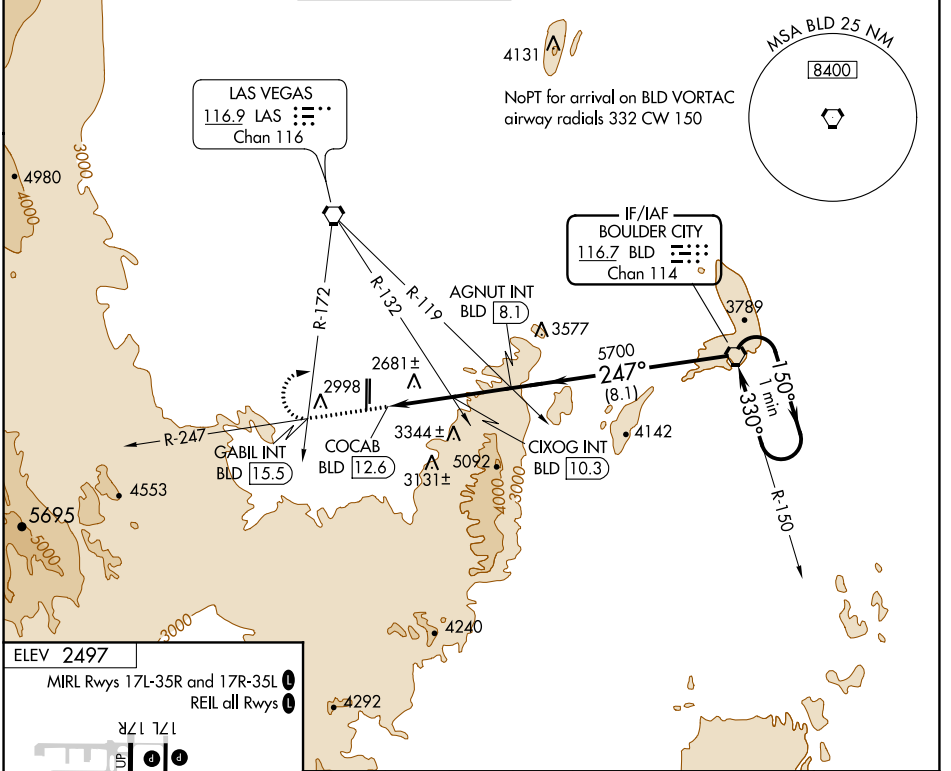
VORTAC BLD <b>116.7</b> Chan <b>114</b>	APP CRS <b>247°</b>	Rwy Idg TDZE Apt Elev <b>2497</b>	N/A N/A <b>2497</b>
---	------------------------	---	---------------------------

**VOR-C**  
HENDERSON EXEC (HND)

**⚠** Circling to Rwy 35L NA at night.  
**⚠** If local altimeter setting not received, use Harry Reid Intl altimeter setting and increase all MDA's 60 feet.

MISSED APPROACH: Climb to 7000 on BLD VORTAC R-247 to GABIL INT/BLD 15.5 DME and right turn direct BLD VORTAC and hold.

ATIS <b>120.775</b>	LAS VEGAS APP CON <b>118.4 307.25</b>	HENDERSON TOWER* <b>125.1</b> (CTAF) <b>0</b>	GND CON <b>127.8</b>	CLNC DEL <b>135.35</b>	CLNC DEL <b>125.9</b> (when twr closed)	UNICOM <b>122.95</b>
------------------------	--	--	-------------------------	---------------------------	---	-------------------------



CATEGORY	A	B	C	D
CIRCLING	4840-1¼ 2343 (2400-1¼)	4840-1½ 2343 (2400-1½)	4840-3 2343 (2400-3)	NA
CIXOG FIX MINIMUMS (DUAL VOR RECEIVERS OR DME REQUIRED)				
CIRCLING	3620-1¼ 1123 (1200-1¼)	3620-1½ 1123 (1200-1½)	3620-3 1123 (1200-3)	NA

SW-4, 09 SEP 2021 to 07 OCT 2021

SW-4, 09 SEP 2021 to 07 OCT 2021