

WAAS CH 99730 W21A	APP CRS 217°	Rwy Idg TDZE 1372 Apt Elev 1372	5153
--	------------------------	---	-------------

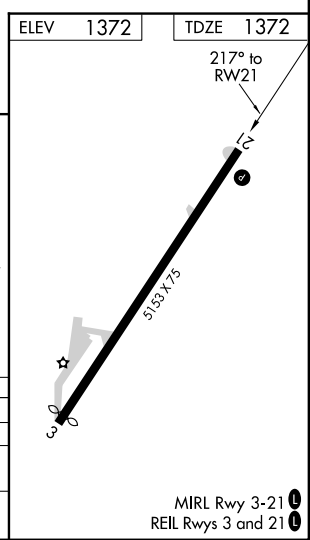
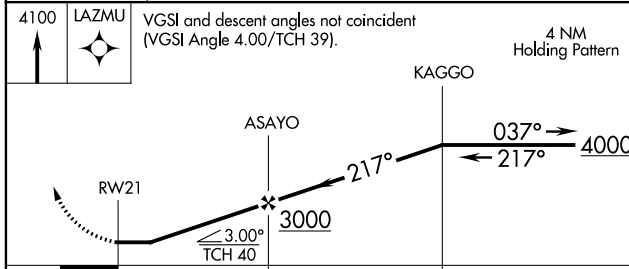
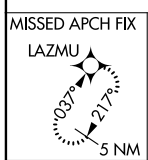
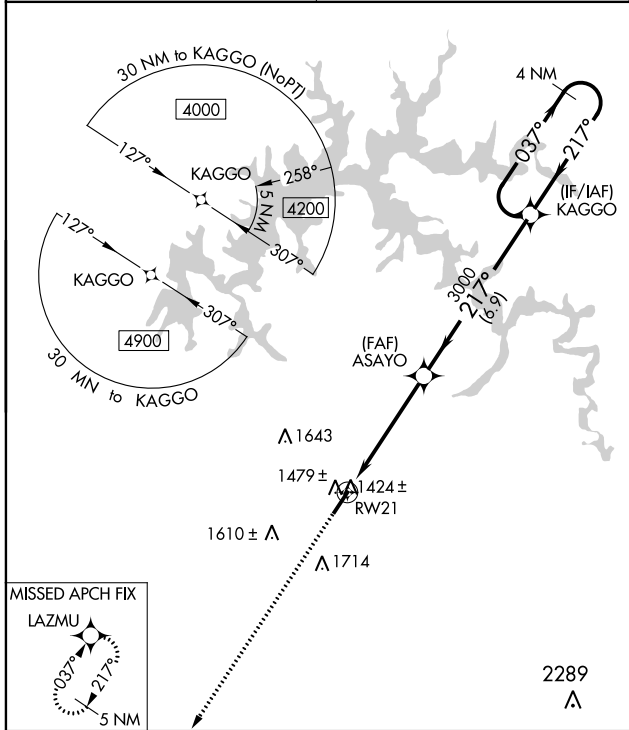
RNAV (GPS) RWY 21

LIVINGSTON MUNI (8A.3)

NA DME/DME RNP-0.3 NA. Circling Rwy 3 NA at night. When local altimeter setting not received, use Crossville altimeter setting and increase all MDA 140 feet; increase LP and LNAV Cats C/D visibility $\frac{3}{8}$ mile; increase Circling Cat B visibility $\frac{1}{4}$ mile and Circling Cats C/D visibility $\frac{1}{2}$ mile. Rwy 21 helicopter visibility reduction below $\frac{3}{4}$ SM NA.

MISSED APPROACH:
Climb to 4100 direct LAZMU and hold.

AWOS-3 126.175	INDIANAPOLIS CENTER 124.625 371.925	UNICOM 122.8 (CTAF) 0
--------------------------	---	---------------------------------



CATEGORY	A	B	C	D
LP MDA		1680-1	308 (400-1)	
LNAV MDA	1760-1	388 (400-1)	1760-1 $\frac{1}{8}$	388 (400-1 $\frac{1}{8}$)
CIRCLING	1860-1 488 (500-1)	2080-1 708 (800-1)	2080-2 708 (800-2)	2080-2 $\frac{1}{4}$ 708 (800-2 $\frac{1}{4}$)

MIRL Rwy 3-21 0
REIL Rwy 3 and 21 0

SE-1, 09 SEP 2021 to 07 OCT 2021

SE-1, 09 SEP 2021 to 07 OCT 2021