

| | | | |
|--|------------------------|-----------------------------|---------------------------------------|
| WAAS CH 86917 W05A | APP CRS 049° | Rwy Idg TDZE Apt Elev | 5105 24 26 |
|--|------------------------|-----------------------------|---------------------------------------|

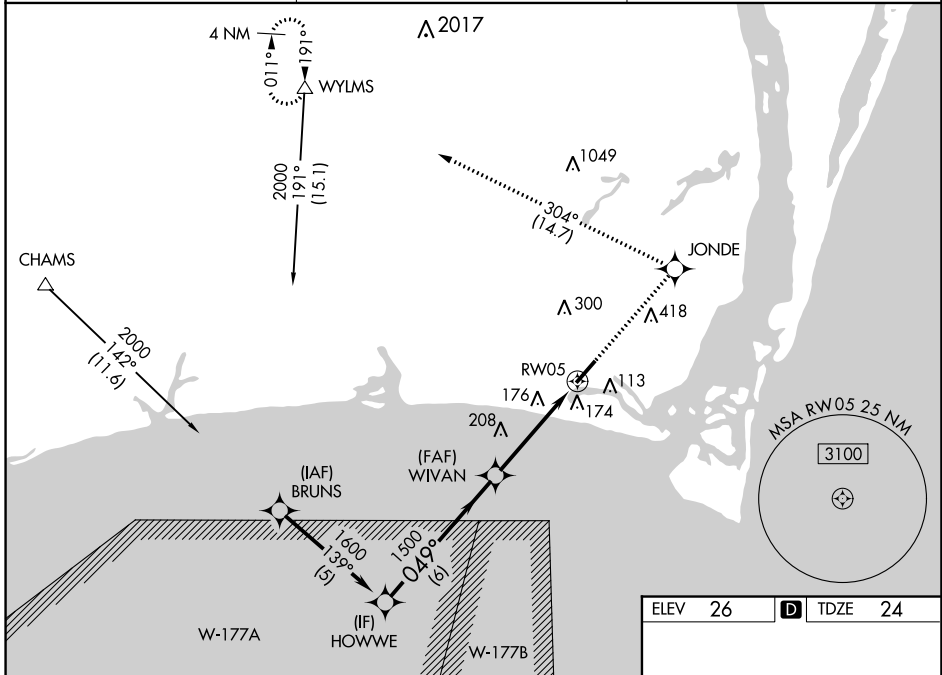
RNAV (GPS) RWY 5

CAPE FEAR RGNL JETPORT/HOWIE FRANKLIN FLD (SUT)

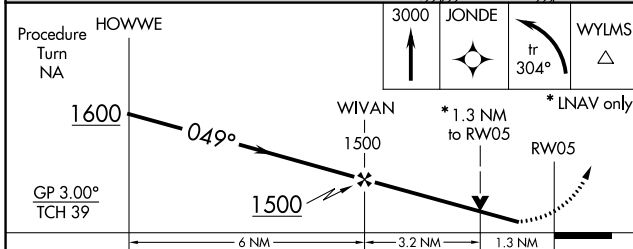
▼ Baro-VNAV NA when using Wilmington altimeter setting. For uncompensated Baro-VNAV systems, LNAV/VNAV NA below -15°C (5°F) or above 54°C (130°F). DME/DME RNP-0.3 NA. Helicopter visibility reduction below 1 SM NA. When local altimeter setting not received, use Wilmington altimeter setting and increase all DA 53 feet and all MDA 60 feet; increase LNAV/VNAV all Cats visibility ¼ mile. VDP NA when using Wilmington altimeter setting.

▲ MISSED APPROACH: Climb to 3000 direct JONDE and left turn on track 304° to WYLSM and hold.

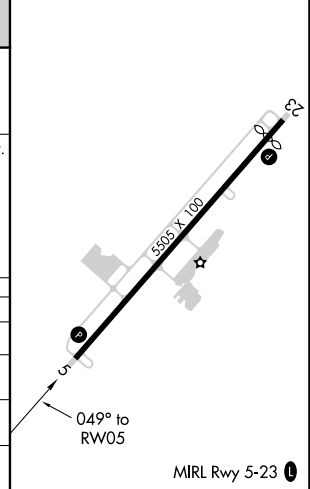
| | | |
|---------------------------|--|----------------------------------|
| AWOS-3P 124.175 | WILMINGTON APP CON ★ 118.25 284.65 | UNICOM 123.05 (CTAF) 0 |
|---------------------------|--|----------------------------------|



| | |
|---------|------------------|
| ELEV 26 | D TDZE 24 |
|---------|------------------|



| CATEGORY | A | B | C | D |
|--------------|--------|--------------|------------------------|----|
| LPV DA | 274-1 | 250 (300-1) | | NA |
| LNAV/VNAV DA | 460-1½ | 436 (500-1½) | | NA |
| LNAV MDA | 460-1 | 436 (500-1) | 460-1¼ 436 (500-1¼) | NA |
| CIRCLING | 480-1 | 454 (500-1) | 520-1½ 494 (500-1½) | NA |



RNAV (GPS) RWY 5

SE-2, 09 SEP 2021 to 07 OCT 2021

SE-2, 09 SEP 2021 to 07 OCT 2021