

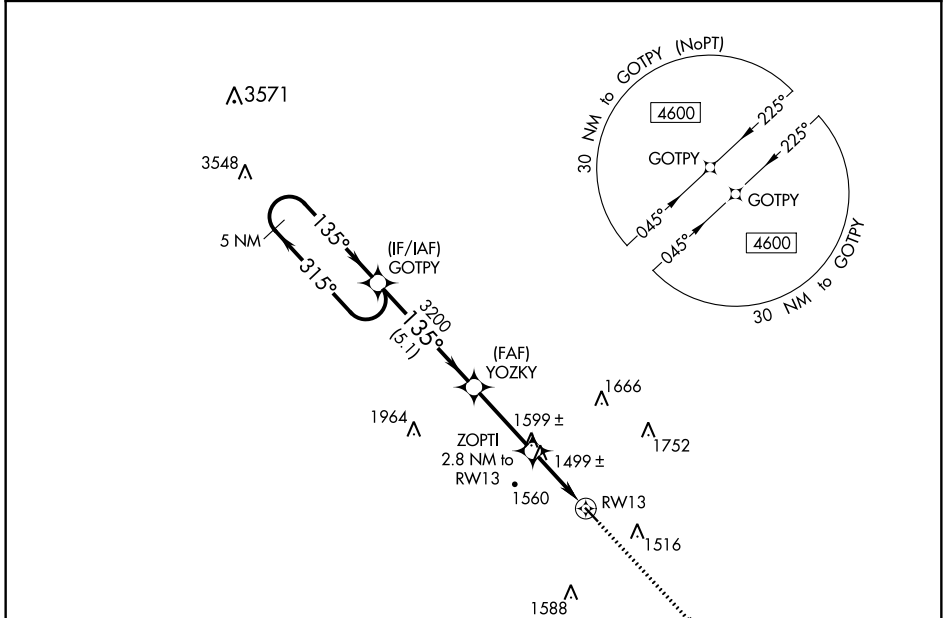
APP CRS	Rwy Idg	<b>3634</b>
<b>135°</b>	TDZE	<b>1277</b>
	Apt Elev	<b>1311</b>

# RNAV (GPS) RWY 13

AVA BILL MARTIN MEML (AOV)

RNP APCH.	Procedure NA at night. Use Branson altimeter setting, if not received use Springfield Branson Natl altimeter setting and increase all MDA 20 feet. Rwy 13 helicopter visibility reduction below 1 SM NA.	MISSED APPROACH: Climb to 3500 direct GAHSU and hold.
⚠ NA		

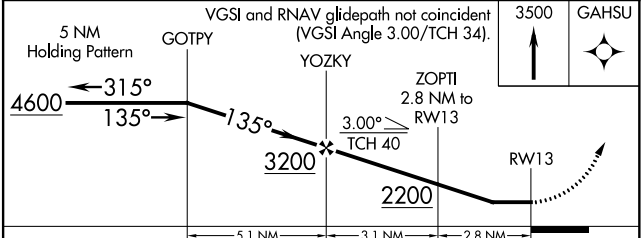
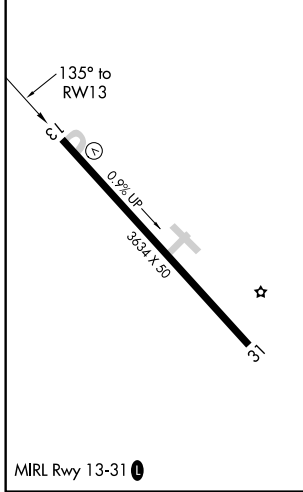
BBG AWOS-3 <b>124.625</b>	SPRINGFIELD APP CON <b>126.35</b>	UNICOM <b>122.7 (CTAF) 0</b>
------------------------------	--------------------------------------	---------------------------------



NC-3, 09 SEP 2021 to 07 OCT 2021

NC-3, 09 SEP 2021 to 07 OCT 2021

ELEV 1311	TDZE 1277
-----------	-----------



CATEGORY	A	B	C	NA	D
LNAV MDA	1840-1	563 (600-1)			