

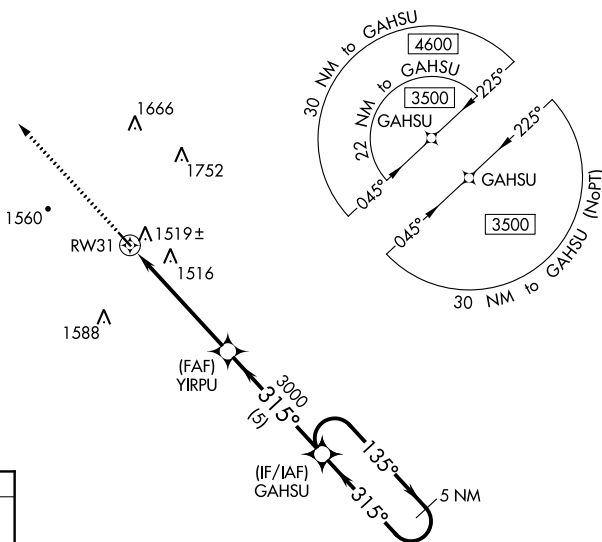
APP CRS	Rwy Idg	3634
315°	TDZE	1311
	Apt Elev	1311

RNAV (GPS) RWY 31

AVA BILL MARTIN MEML (AOV)

RNP APCH.		MISSED APPROACH: Climb to 4600 direct GOTPY and hold, continue climb-in-hold to 4600.
<p>Procedure NA at night. Rwy 31 helicopter visibility reduction below 1 SM NA.</p> <p>Use Branson altimeter setting, if not received use Springfield Branson Natl altimeter setting and increase all MDA 20 feet.</p>		
BBG AWOS-3 124.625	SPRINGFIELD APP CON 126.35	UNICOM 122.7 (CTAF) 0

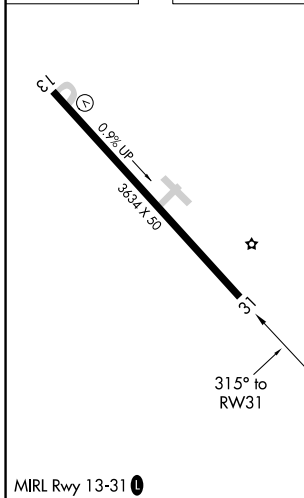
△ 3548



NC-3, 09 SEP 2021 to 07 OCT 2021

NC-3, 09 SEP 2021 to 07 OCT 2021

ELEV 1311	TDZE 1311
-----------	-----------



4600	GOTPY	Visual Segment - Obstacles.		GAHSU	5 NM Holding Pattern
↑	✧	YIRPU	3000	315°	135° → 3500
		RW31		← 315°	
		5.2 NM	5 NM		
CATEGORY	A	B	C	D	
LNAV MDA	1860-1	549 (600-1)			NA