

|  |                        |   |
|--|------------------------|---|
| WAAS<br>CH <b>77637</b><br><b>W15A</b> | APP CRS<br><b>146°</b> | Rwy Idg <b>3999</b><br>TDZE <b>984</b><br>Apt Elev <b>984</b> |
|--|------------------------|---|

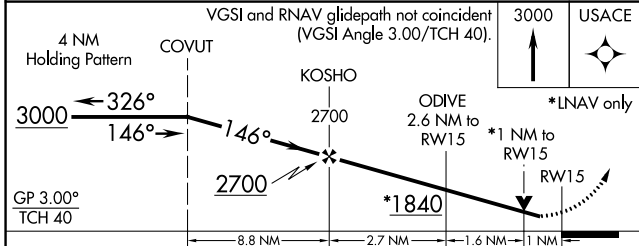
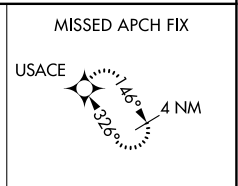
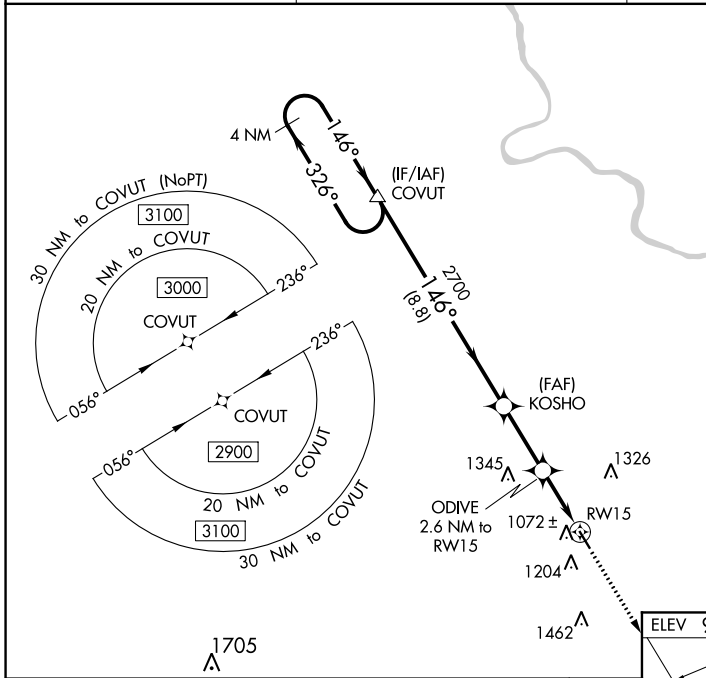
# RNAV (GPS) RWY 15

BRENNER FLD (FNB)

**⚠️ NA** For uncompensated Baro-VNAV systems, LNAV/VNAV NA below -21°C (-5°F) or above 54°C (130°F). DME/DME RNP-0.3 NA. When local altimeter setting not received, use Nebraska City altimeter setting and increase all DA 104 feet and increase all MDA 120 feet. VDP NA when using Nebraska City altimeter setting. Helicopter visibility reduction below ¾ SM NA. Baro-VNAV NA when using Nebraska City altimeter setting.

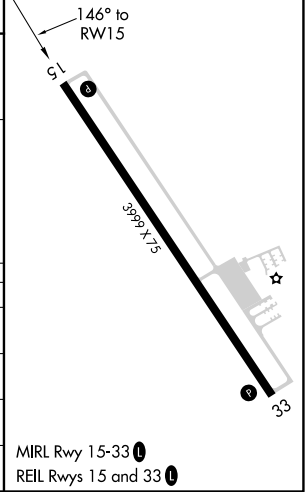
MISSED APPROACH: Climb to 3000 direct USACE and hold.

|                        |  |  |
|------------------------|--|--|
| ASOS<br><b>119,275</b> | ST JOSEPH APP CON<br><b>120.35 360.8</b> | UNICOM<br><b>122.8</b> (CTAF) <b>📻</b> |
|------------------------|--|--|



|          |          |
|----------|----------|
| ELEV 984 | TDZE 984 |
|----------|----------|

| CATEGORY          | A      | B           | C | D  |
|-------------------|--------|-------------|---|----|
| LPV DA            | 1234-1 | 250 (300-1) |   | NA |
| LNAV/VNAV DA      | 1234-1 | 250 (300-1) |   | NA |
| LNAV MDA          | 1340-1 | 356 (400-1) |   | NA |
| <b>📻</b> CIRCLING | 1560-1 | 576 (600-1) |   | NA |



NC-2, 09 SEP 2021 to 07 OCT 2021

NC-2, 09 SEP 2021 to 07 OCT 2021