

WAAS CH 45520 W33A	APP CRS 326°	Rwy Idg 3999 TDZE 984 Apt Elev 984
----------------------------------------	------------------------	---------------------------------------------------------------

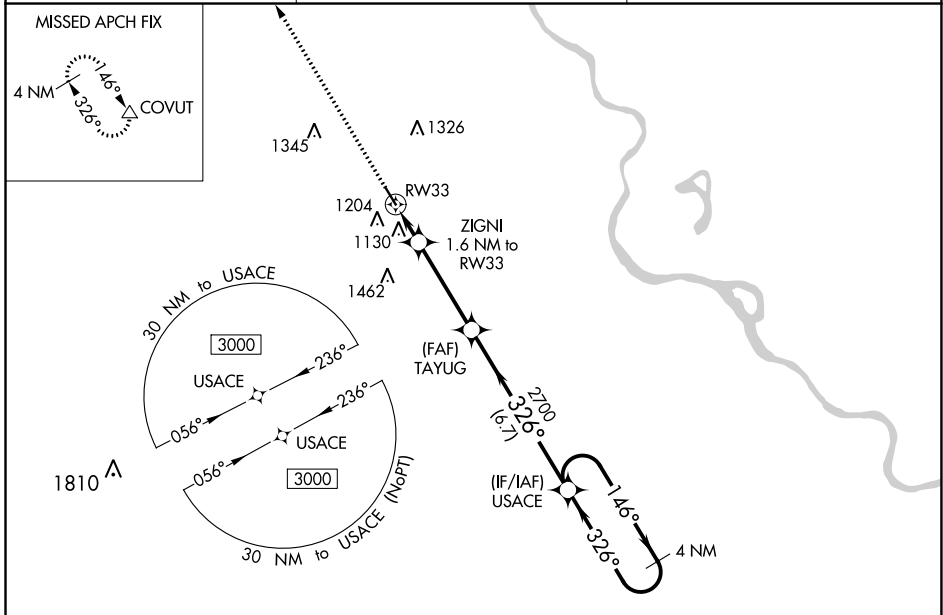
RNAV (GPS) RWY 33

BRENNER FLD (FNB)

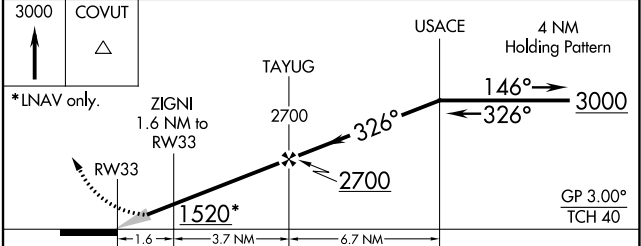
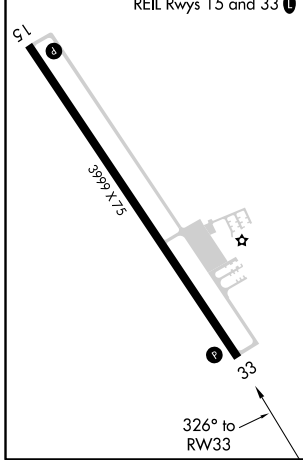
NA For uncompensated Baro-VNAV systems, LNAV/VNAV NA below -21°C (-5°F) or above 54°C (130°F). DME/DME RNP-0,3 NA. VDP and Baro-VNAV NA when using Nebraska City altimeter setting. When local altimeter not received, use Nebraska City altimeter setting and increase all DA 104 feet and all MDA 120 feet.

MISSED APPROACH: Climb to 3000 direct COVUT and hold.

ASOS 119.275	ST JOSEPH APP CON 120.35 360.8	UNICOM 122.8 (CTAF) 0
------------------------	------------------------------------------	---------------------------------



ELEV 984	TDZE 984
MIRL Rwy 15-33	REIL Rwy 15 and 33



CATEGORY	A	B	C	D
LPV DA	1234-1	250 (300-1)		NA
LNAV/VNAV DA	1276-1	292 (300-1)		NA
LNAV MDA	1380-1	396 (400-1)		NA
C CIRCLING	1560-1	576 (600-1)		NA

NC-2, 09 SEP 2021 to 07 OCT 2021

NC-2, 09 SEP 2021 to 07 OCT 2021