

| | | | |
|--|------------------------|-----------------------------|---|
| WAAS CH 82428 W03A | APP CRS 031° | Rwy Idg TDZE Apt Elev | 5003 473 473 |
|--|------------------------|-----------------------------|---|

RNAV (GPS) RWY 3

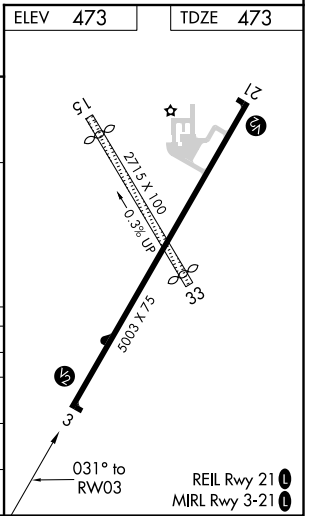
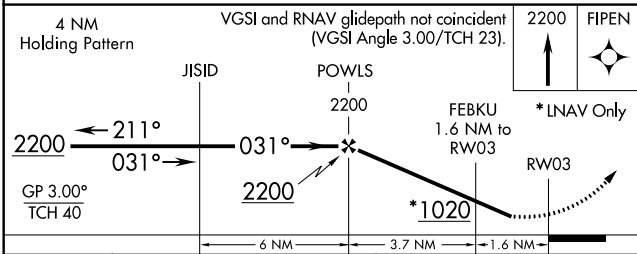
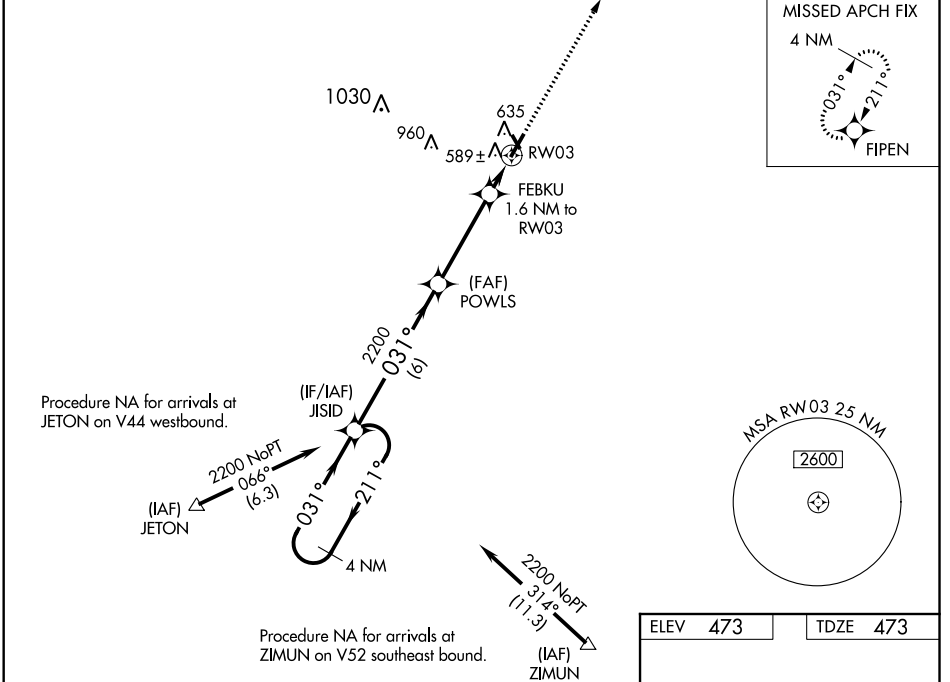
FLORA MUNI (F.O.A)

RNP APCH.

⚠ Baro-VNAV NA when using Olney-Noble altimeter setting. For uncompensated Baro-VNAV systems, LNAV/VNAV NA below -17°C or above 54°C. When local altimeter setting not received, use Olney-Noble altimeter setting and increase all DA 33 feet and all MDA 40 feet; increase LPV visibility all Cats, and LNAV Cat C visibility 1/8 mile. Circling Cat C visibility 1/2 mile. Rwy 3 helicopter visibility reduction below 3/4 SM NA. Circling NA to Rwys 15 and 33.

MISSED APPROACH:
Climb to 2200 direct
FIPEN and hold.

| | | |
|--------------------------|--|---------------------------------|
| AWOS-3 120.175 | KANSAS CITY CENTER 127.7 351.825 | UNICOM 122.7 (CTAF) 0 |
|--------------------------|--|---------------------------------|



| CATEGORY | A | B | C | D |
|--------------|-----------|-----------------|-------------------------------|----|
| LPV DA | 783-1 | 310 (400-1) | | NA |
| LNAV/VNAV DA | 859-1 3/8 | 386 (400-1 3/8) | | NA |
| LNAV MDA | 860-1 | 387 (400-1) | 860-1 1/8 387 (400-1 1/8) | NA |
| CIRCLING | 940-1 | 467 (500-1) | 1120-1 3/4 647 (700-1 3/4) | NA |

EC-3, 09 SEP 2021 to 07 OCT 2021

EC-3, 09 SEP 2021 to 07 OCT 2021