

WAAS CH <b>82126</b> <b>W02A</b>	APP CRS <b>021°</b>	Rwy Idg <b>4698</b> TDZE <b>3205</b> Apt Elev <b>3205</b>
--	------------------------	---

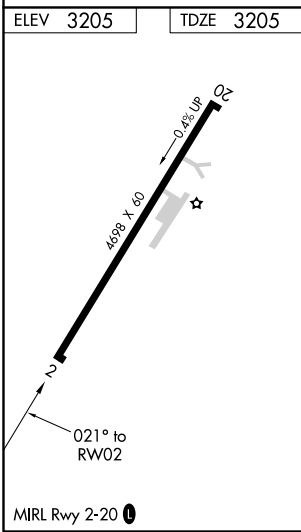
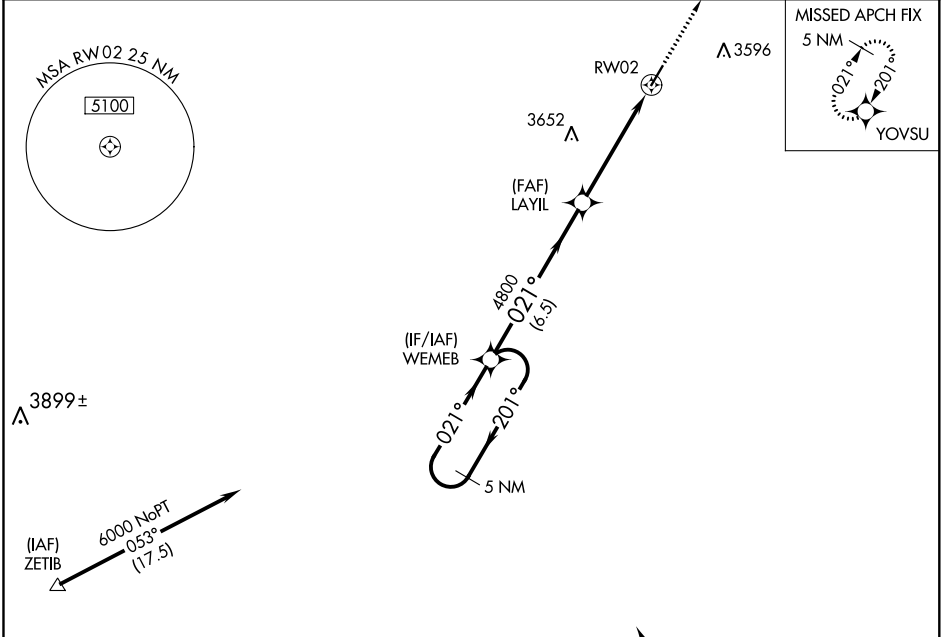
# RNAV (GPS) RWY 2

GRUVER MUNI (E19)

**NA** DME/DME RNP-0.3 NA. Helicopter visibility reduction below 1 SM NA. Use Guymon altimeter setting, when not received, use Borger altimeter setting and increase all MDA 40 feet. Procedure NA at night.

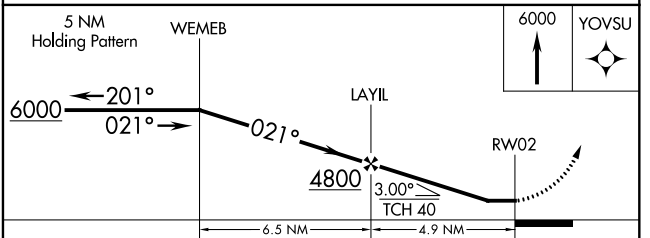
MISSED APPROACH: Climb to 6000 direct YOVSU and hold.

GUY ASOS <b>119.925</b>	ALBUQUERQUE CENTER <b>127.85 285.475</b>	CTAF <b>122.9 0</b>
----------------------------	---	------------------------



Procedure NA for arrivals on BGD VORTAC airway radials 241 CW 050.

(IAF) BORGER BGD



CATEGORY	A	B	C	D
LP MDA	3780-1	575 (600-1)		NA
LNAV MDA	3780-1	575 (600-1)		NA
CIRCLING	3780-1	575 (600-1)		NA

SC-2, 09 SEP 2021 to 07 OCT 2021

SC-2, 09 SEP 2021 to 07 OCT 2021