

RNAV (GPS) RWY 26

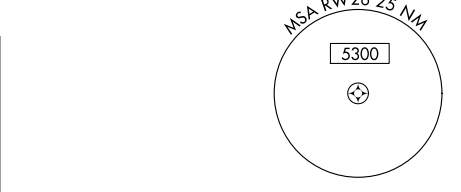
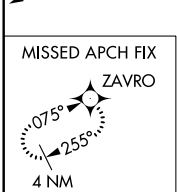
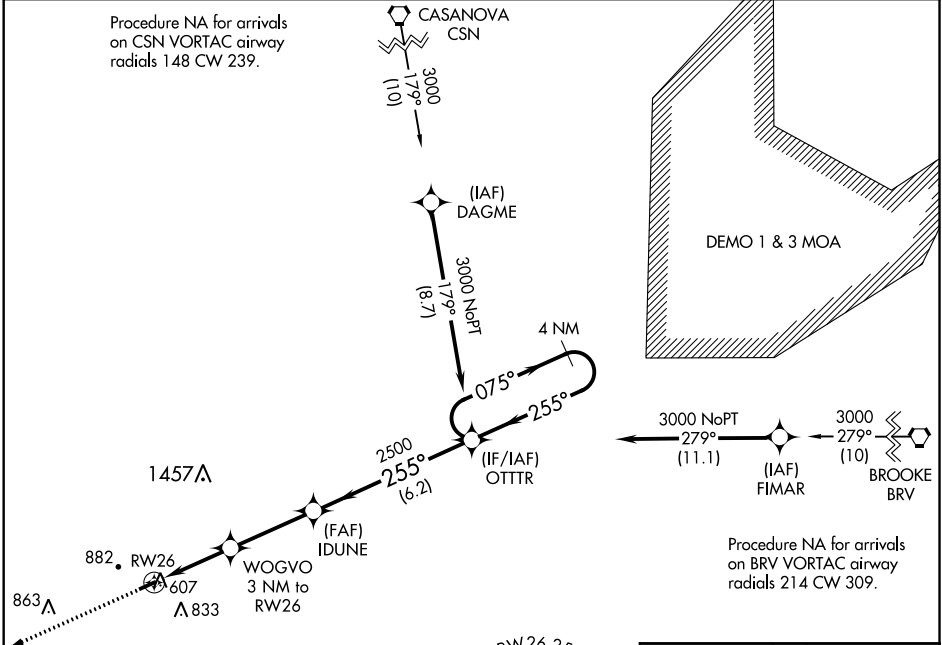
ORANGE COUNTY (OMH)

APP CRS	Rwy Idg	3200
255°	TDZE	464
	Apt Elev	464

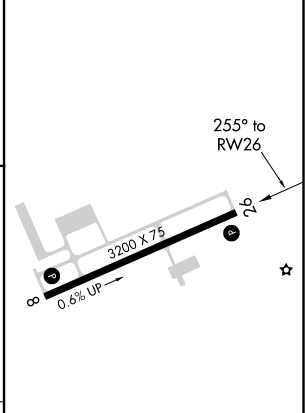
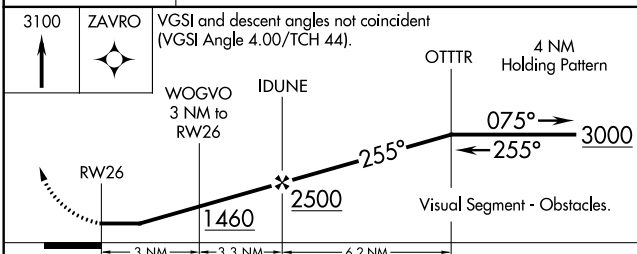
⚠ DME/DME RNP-0.3 NA. When local altimeter setting not received, use Charlottesville altimeter setting and increase all MDA 80 feet. Rwy 26 helicopter visibility reduction below 1 SM NA. Straight-in Rwy 26 NA at night, Circling Rwy 26 NA at night.

MISSED APPROACH:
Climb to 3100 direct ZAVRO and hold.

AWOS-3 118.075	POTOMAC APP CON 132.85 323.125	UNICOM 122.8 (CTAF) 0
---------------------------------	---	--



ELEV 464	TDZE 464
----------	----------



CATEGORY	A	B	C	D
LNAV MDA	980-1	516 (600-1)		NA
CIRCLING	1300-1¼	836 (900-1¼)		NA

MIRL Rwy 8-26 0
REIL Rwy 8 and 26 0

NE-3, 09 SEP 2021 to 07 OCT 2021

NE-3, 09 SEP 2021 to 07 OCT 2021