

APP CRS	Rwy Idg	3200
075°	TDZE	461
	Apt Elev	464

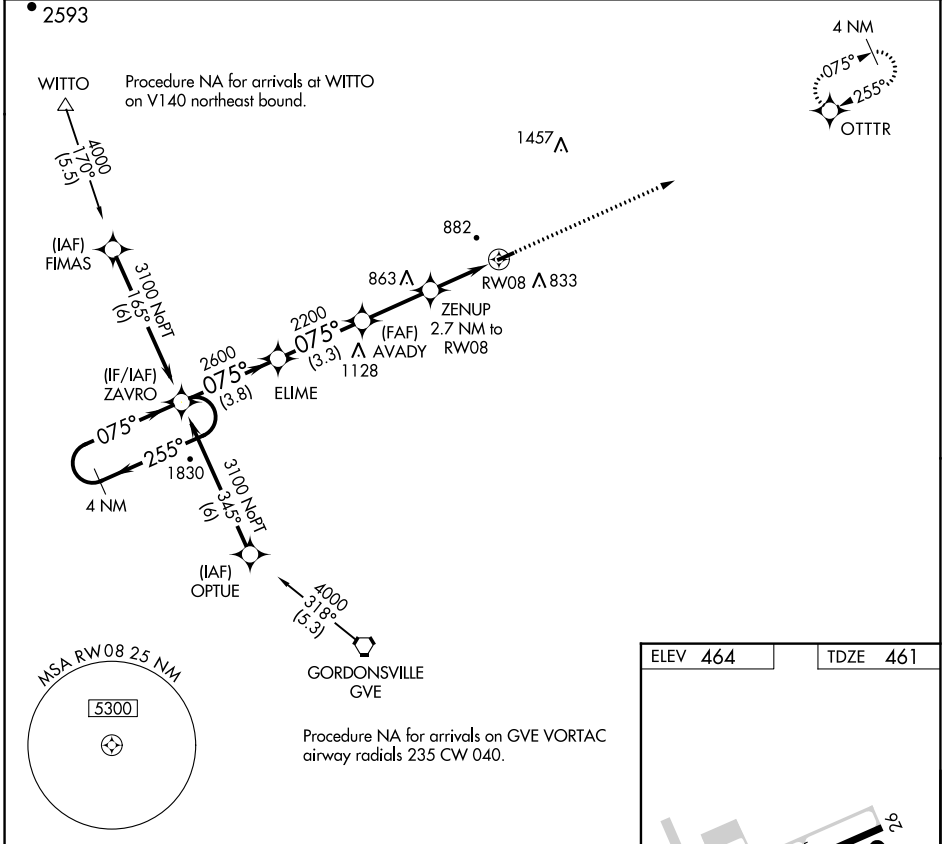
RNAV (GPS) RWY 8

ORANGE COUNTY (OMH)

⚠ Circling Rwy 26 NA at night. DME/DME RNP-0.3 NA. VDP NA with Charlottesville altimeter setting. When local altimeter setting not received, use Charlottesville altimeter setting and increase all MDA 80 feet. Rwy 8 helicopter visibility reduction below 3/4 SM NA. Rwy 26 helicopter visibility reduction below 1 SM NA.

MISSED APPROACH:
Climb to 3000 direct OTTR and hold.

AWOS-3 118.075	POTOMAC APP CON 132.85 323.125	UNICOM 122.8 (CTAF) 0
--------------------------	--	---------------------------------



NE-3, 09 SEP 2021 to 07 OCT 2021

NE-3, 09 SEP 2021 to 07 OCT 2021

ELEV 464	TDZE 461
----------	----------

MRL Rwy 8-26 0
REIL Rws 8 and 26 0

4 NM Holding Pattern	ZAVRO	ELIME	AVADY	ZENUP 2.7 NM to RW08	3000	OTTR
3100	2600	2200	1340	1.3 NM to RW08	↑	⬠
Visual Segment - Obstacles.						
	3.8 NM	3.3 NM	2.7 NM	1.4 NM	1.3 NM	
CATEGORY	A	B	C	D		
LNAV MDA	1040-1	579 (600-1)		NA		
C CIRCLING	1300-1 1/4	836 (900-1 1/4)		NA		

VGSI and descent angles not coincident (VGSI Angle 4.00/TCH 42).