

WAAS CH <b>72735</b> <b>W11A</b>	APP CRS <b>105°</b>	Rwy Idg <b>5004</b> TDZE <b>600</b> Apt Elev <b>603</b>
--	------------------------	---

# RNAV (GPS) RWY 11

ELBERT COUNTY-PATZ FIELD (EBA)

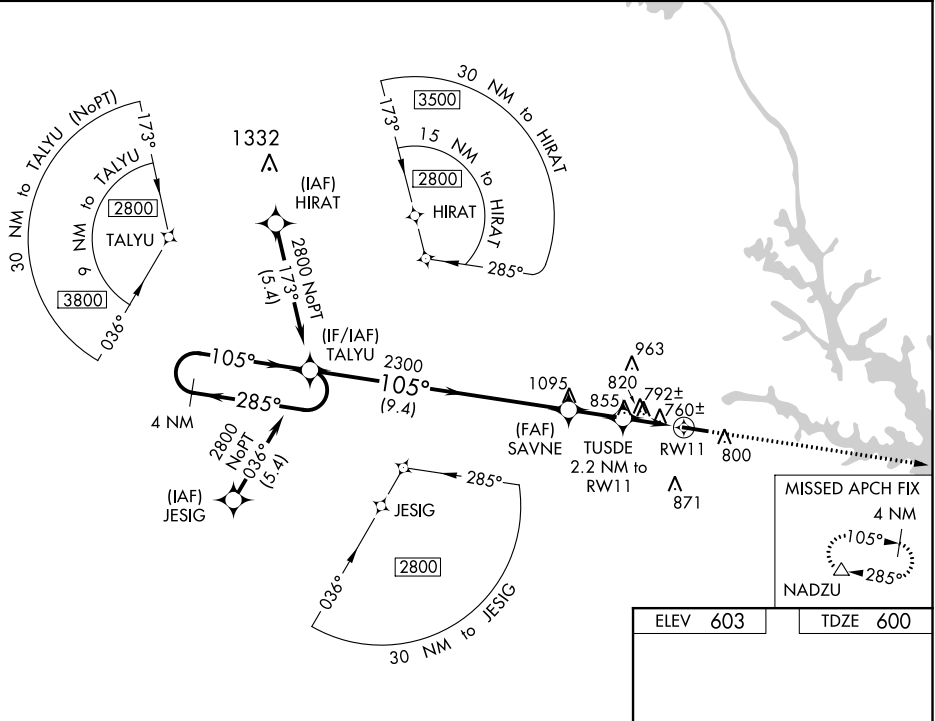
**⚠** DME/DME RNP-0.3 NA. Procedure NA at night. Helicopter visibility reduction below 1 SM NA. When local altimeter setting not received, use Anderson altimeter setting and increase all MDA 100 feet and increase LP Cat C visibility ¼ mile, LNAV Cat C visibility ⅓ mile and Circling Cat C visibility ½ mile.

**MISSED APPROACH:** Climb to 2500 direct NADZU and hold.

AWOS-3  
**118.15**

ATLANTA CENTER  
**127.5 316.05**

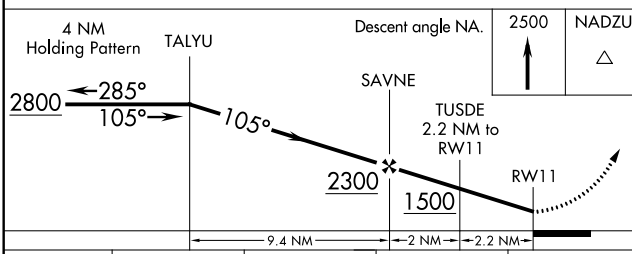
UNICOM  
**122.8 (CTAF) 1**



SE-4, 09 SEP 2021 to 07 OCT 2021

SE-4, 09 SEP 2021 to 07 OCT 2021

ELEV 603	TDZE 600
MIRL Rwy 11-29 1	



CATEGORY	A	B	C	D
LP MDA	1060-1	460 (500-1)	1060-1 ⅜ 460 (500-1 ⅜)	NA
LNAV MDA	1120-1	520 (600-1)	1120-1 ⅜ 520 (600-1 ⅜)	NA
<b>C</b> CIRCLING	1160-1	557 (600-1)	1340-2 737 (800-2)	NA