

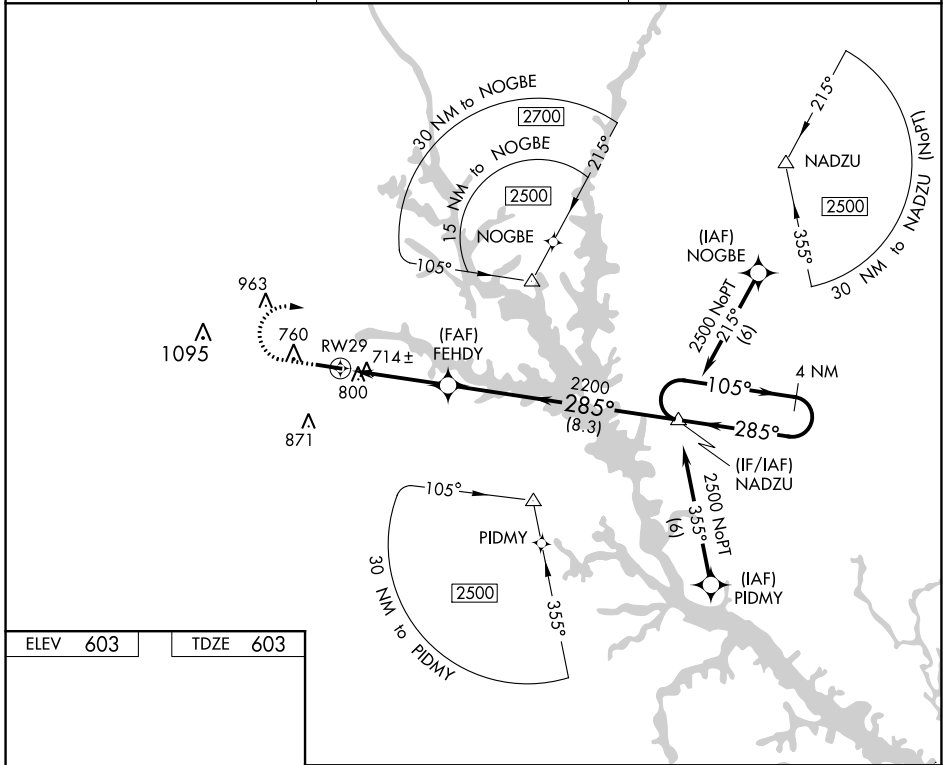
WAAS CH 45735 W29A	APP CRS 285°	Rwy Idg TDZE Apt Elev	5004 603 603
--	------------------------	-----------------------------	---

RNAV (GPS) RWY 29
ELBERT COUNTY-PATZ FIELD (EBA)

⚠ DME/DME RNP-0.3 NA. When local altimeter not received, use Anderson altimeter setting and increase all MDA 100 feet. Increase LP Cat C and LNAV Cat C visibility 3/8 mile and Circling Cat C visibility 1/2 mile. Procedure NA at night. Helicopter visibility reduction below 1 SM NA.

⚠ MISSED APPROACH: Climb to 1100 then climbing right turn to 2500 direct NADZU and hold.

AWOS-3 118.15	ATLANTA CENTER 127.5 316.05	UNICOM 122.8 (CTAF)
-------------------------	---------------------------------------	-------------------------------



ELEV 603	TDZE 603					
1100	2500	NADZU	Descent angle NA.		NADZU	4 NM Holding Pattern
		FEHDY				
		RWY 29				
CATEGORY	A	B	C	D		
LP MDA	980-1		377 (400-1)		NA	
LNAV MDA	1100-1	497 (500-1)		1100-1 3/8 497 (500-1 3/8)		NA
C CIRCLING	1160-1	557 (600-1)		1340-2 737 (800-2)		NA

SE-4, 09 SEP 2021 to 07 OCT 2021

SE-4, 09 SEP 2021 to 07 OCT 2021