

ELBERTON, GEORGIA

AL-6567 (FAA)

19059

VOR/DME AHN 109.6 Chan 33	APP CRS 070°	Rwy Idg 5004 TDZE 600 Apt Elev 603
---	------------------------	---

VOR/DME RWY 11

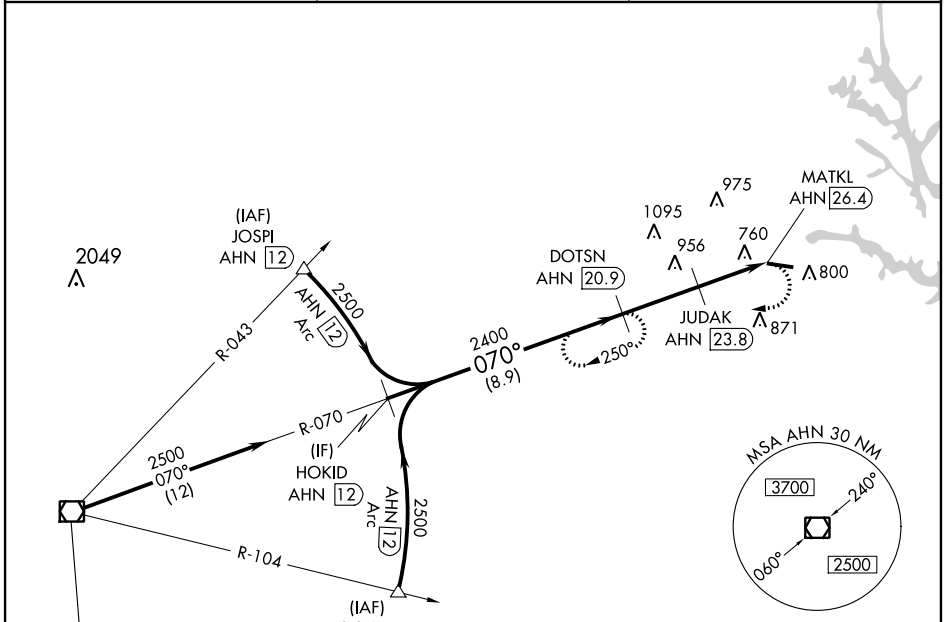
ELBERT COUNTY-PATZ FIELD (EBA)

▽ When local altimeter setting not received, use Anderson altimeter setting and increase all MDA 100 feet and increase S-11 Cat C visibility ¼ mile and Circling Cat C visibility ½ mile. Procedure NA at night. Helicopter visibility reduction below 1 SM NA.

△ NA

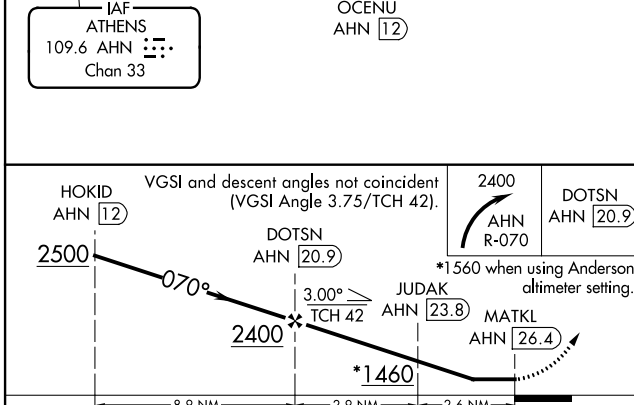
MISSED APPROACH: Climbing right turn to 2400 on AHN VOR/DME R-070 to DOTSN/AHN 20.9 DME and hold.

AWOS-3 118.15	ATLANTA CENTER 127.5 316.05	UNICOM 122.8 (CTAF) 📻
-------------------------	---------------------------------------	--

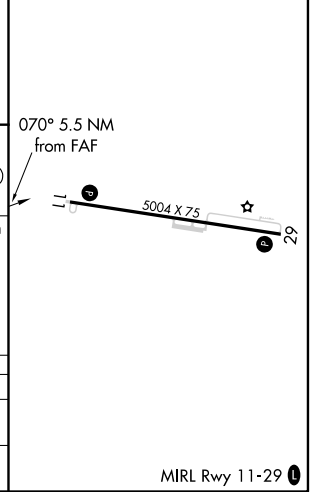


IAF
ATHENS
109.6 AHN
Chan 33

ELEV 603	TDZE 600
----------	----------



CATEGORY	A	B	C	D
S-11	1200-1	600 (600-1)	1200-1¾ 600 (600-1¾)	NA
C CIRCLING	1200-1 597 (600-1)	1200-1¼ 597 (600-1¼)	1340-2 737 (800-2)	NA



ELBERTON, GEORGIA
Amdt 4B 15SEP16

34°06'N-82°49'W

ELBERT COUNTY-PATZ FIELD (EBA)

VOR/DME RWY 11

SE-4, 09 SEP 2021 to 07 OCT 2021

SE-4, 09 SEP 2021 to 07 OCT 2021