

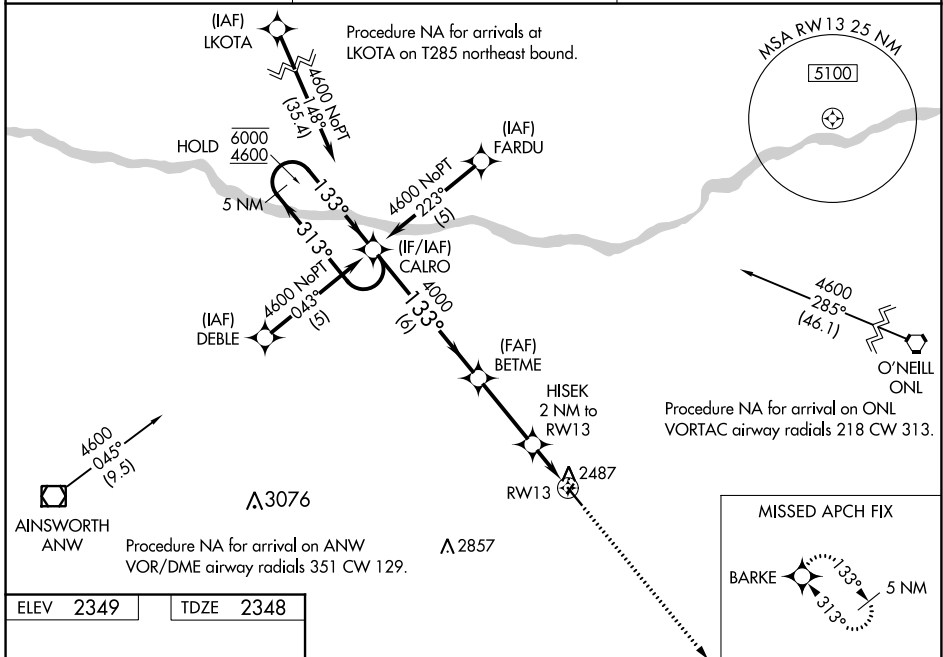
WAAS CH 86817 W13A	APP CRS 133°	Rwy Idg TDZE Apt Elev	4698 2348 2349
--	------------------------	-----------------------------	---

RNAV (GPS) RWY 13

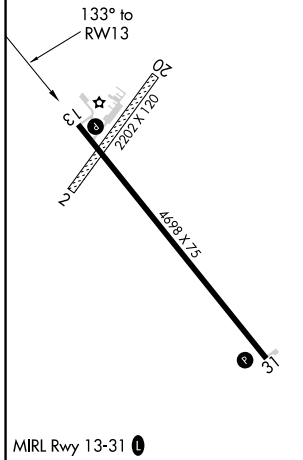
ROCK COUNTY (R.B.E.)

RNP APCH.	<p>▼ Circling NA to Rwy 2 and 20. Rwy 13 helicopter visibility reduction below 1 SM NA. ▲ NA Baro-VNAV NA. Use Ainsworth altimeter setting; when not received, use O'Neill altimeter setting and increase LPV DA to 2778 feet and visibility ¼ SM, LNAV/VNAV DA to 2815 feet and visibility ¼ SM; increase all MDAs 60 feet. Straight-in Rwy 13 NA at night, Circling Rwy 13 NA at night.</p>	MISSED APPROACH: Climb to 5100 direct BARKE and hold.
-----------	---	--

ANW AWOS-3 118.325	DENVER CENTER 127.95 338.2	CTAF 122.90
------------------------------	--------------------------------------	-----------------------



ELEV 2349	TDZE 2348
-----------	-----------



5 NM Holding Pattern		CALRO	BETME	HISEK 2 NM to RWY 13	RWY 13
6000	← 313°	→ 133°	4000	*3020	
4600					
GP 3.00°	TCH 40	6 NM	3.1 NM	2 NM	
CATEGORY	A	B	C	D	
LPV DA	2723-1	375 (400-1)		NA	
LNAV/VNAV DA	2760-1½	412 (500-1½)		NA	
LNAV MDA	2880-1	532 (600-1)		NA	
CIRCLING	2920-1	571 (600-1)		NA	

5100 BARKE

* LNAV only

NC-2, 09 SEP 2021 to 07 OCT 2021

NC-2, 09 SEP 2021 to 07 OCT 2021