

WAAS CH <b>86835</b> <b>W28A</b>	APP CRS <b>276°</b>	Rwy Idg TDZE Apt Elev	<b>3541</b> <b>851</b> <b>853</b>
--	------------------------	-----------------------------	---

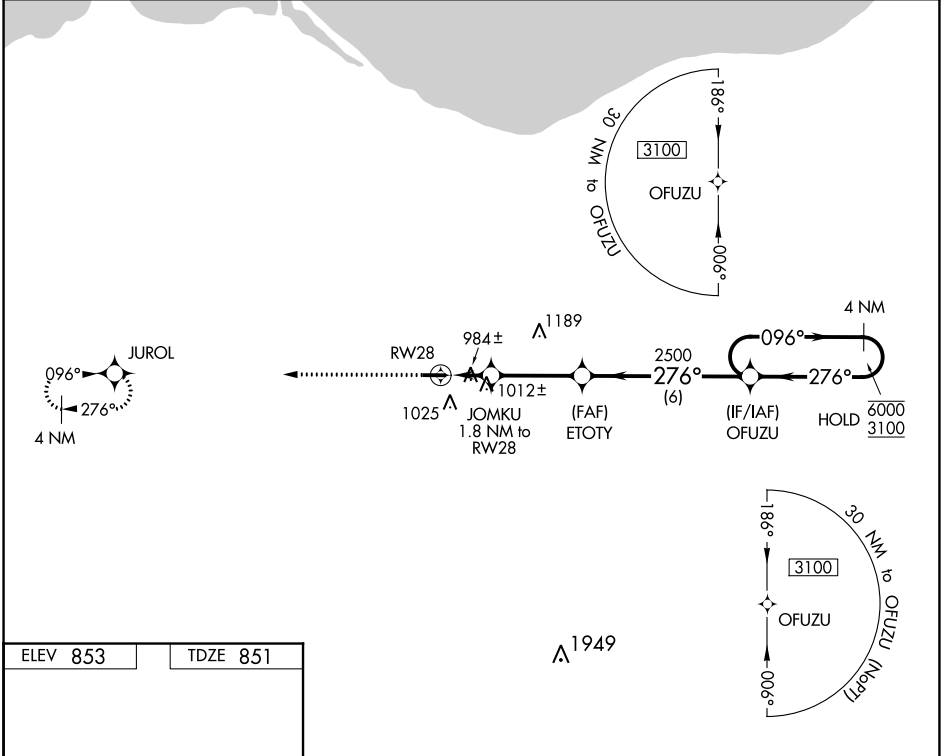
# RNAV (GPS) RWY 28

NORWALK-HURON COUNTY (5A.1)

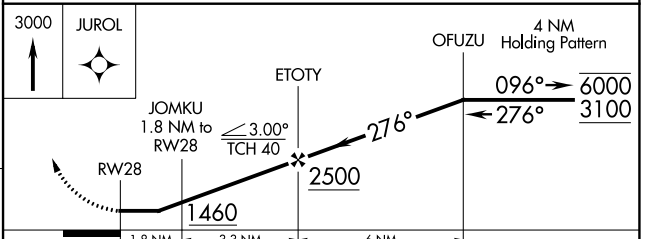
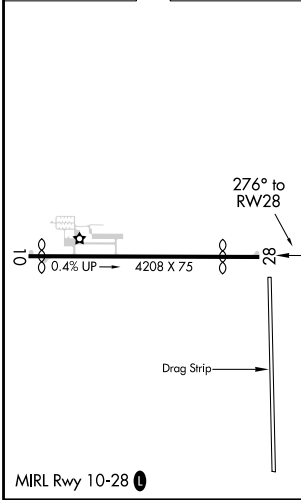
RNP APCH. MISSED APPROACH: Climb to 3000 direct JUROL and hold.

**NA** Rwy 28 helicopter visibility reduction below 1 SM NA. Procedure NA at night. Use Cleveland-Hopkins Intl climeter setting.

CLE ASOS <b>127.85</b>	CLEVELAND APP CON ★ <b>124.2 360.65</b>	UNICOM <b>122.8 (CTAF) 0</b>
---------------------------	--	---------------------------------



ELEV 853	TDZE 851
----------	----------



CATEGORY	A	B	C	D
LP MDA	1320-1	469 (500-1)	1320-1 $\frac{3}{8}$ 469 (500-1 $\frac{3}{8}$ )	NA
LNAV MDA	1360-1	509 (600-1)	1360-1 $\frac{3}{8}$ 509 (600-1 $\frac{3}{8}$ )	NA
<b>C</b> CIRCLING	1420-1	567 (600-1)	1440-1 $\frac{1}{2}$ 587 (600-1 $\frac{1}{2}$ )	NA

EC-2, 09 SEP 2021 to 07 OCT 2021

EC-2, 09 SEP 2021 to 07 OCT 2021