

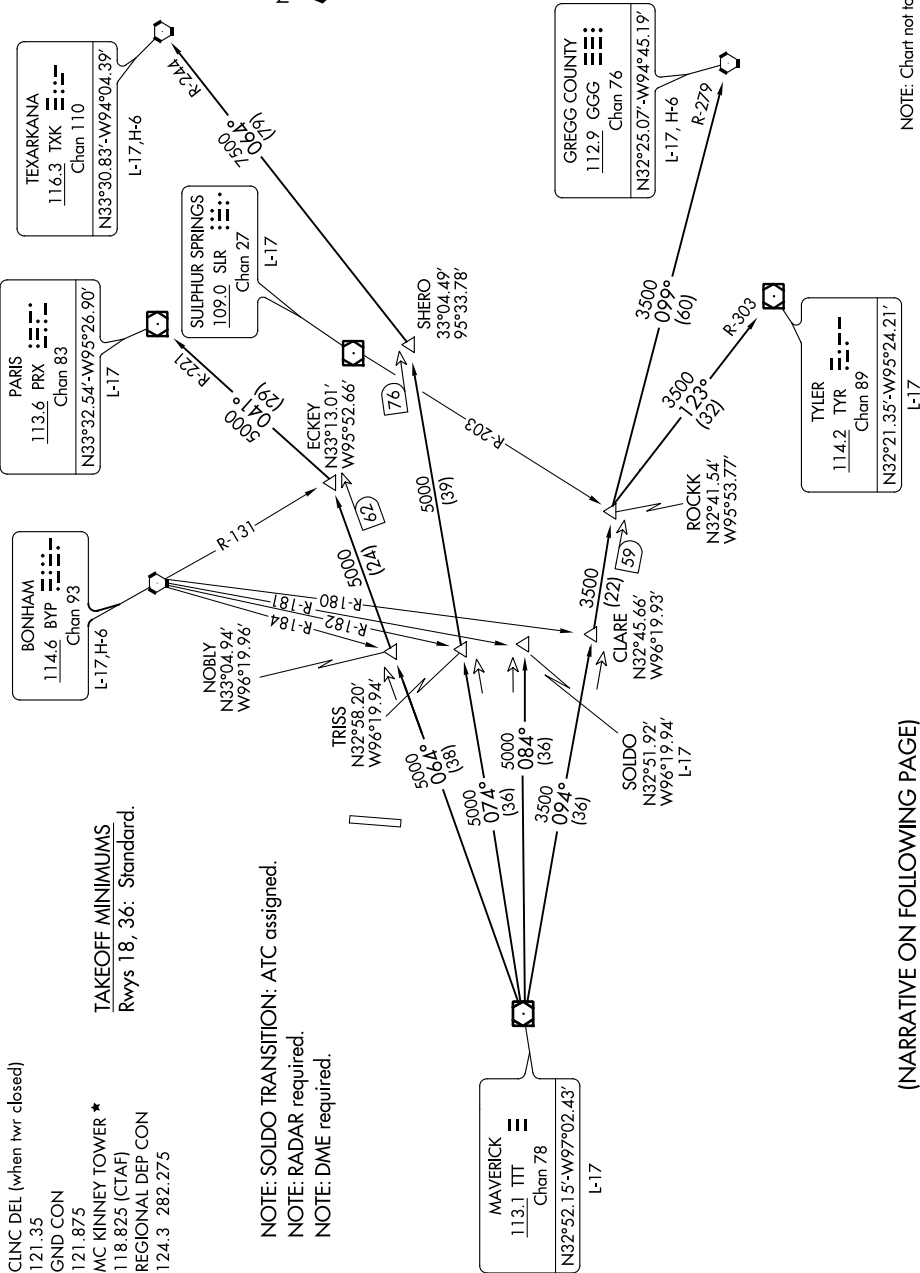
SC-2, 09 SEP 2021 to 07 OCT 2021

CLNC DEL (when twr closed)
121.35
GND CON
121.875
MC KINNEY TOWER *
118.825 (CTAF)
REGIONAL DEP CON
124.3 282.275

TAKEOFF MINIMUMS
Rwys 18, 36: Standard.

NOTE: SOLDI TRANSITION: ATC assigned.
NOTE: RADAR required.
NOTE: DME required.

MAVERICK
113.1 TTT
Chan 78
N32°52.15'-W97°02.43'
L-17



NOTE: Chart not to scale.

(NARRATIVE ON FOLLOWING PAGE)

SC-2, 09 SEP 2021 to 07 OCT 2021