


WAAS CH 87102 W18A	APP CRS 179°	Rwy Idg TDZE Apt Elev	7002 576 589
---------------------------------	------------------------	-----------------------------	---

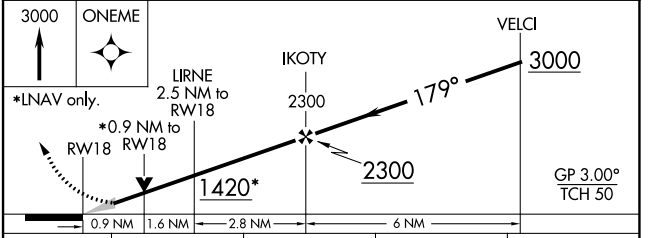
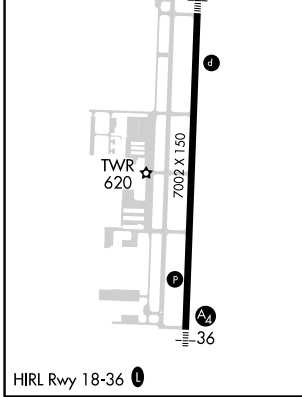
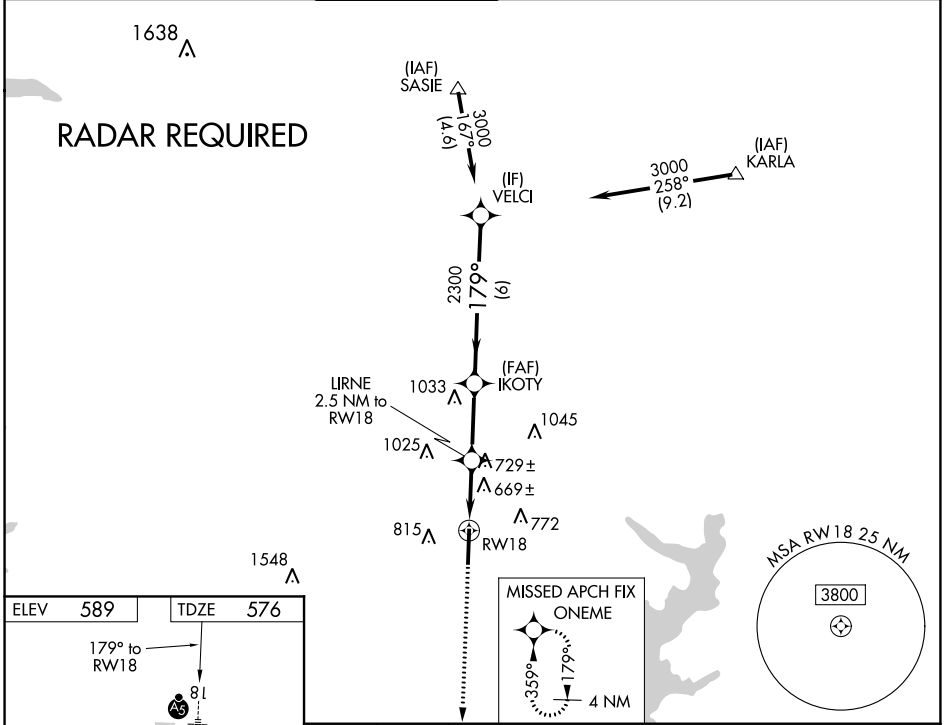
RNAV (GPS) RWY 18

MCKINNEY NTL (TKI)

⚠ DME/DME RNP-0.3 NA. VDP NA with Dallas Love Fld altimeter setting. When local altimeter setting not received, use Dallas Love Fld altimeter setting and increase all DA 70 feet and all MDA 80 feet, increase LNAV Cats C and D 1/8 mile, and Circling Cats C and D visibility 1/2 mile. For inop MALS when using Dallas Love Fld altimeter setting increase LPV all Cats visibility to 1 mile.

MALS

MISSED APPROACH:
Climb to 3000 direct ONEME and hold.

ATIS 119.925	REGIONAL APP CON 124.3 282.275	MC KINNEY TOWER ★ 118.825 (CTAF) 0	GND CON 121.875	CLNC DEL 121.35 (When twr closed)	UNICOM 122.95
------------------------	--	--	---------------------------	--	-------------------------



CATEGORY	A	B	C	D
LPV DA	776-1/2		200 (200-1/2)	
LNAV MDA	920-1/2	344 (400-1/2)	920-5/8	344 (400-5/8)
C CIRCLING	1040-1 451 (500-1)	1120-1 531 (600-1)	1200-1 3/4 611 (700-1 3/4)	1380-2 1/2 791 (800-2 1/2)

SC-2, 09 SEP 2021 to 07 OCT 2021

SC-2, 09 SEP 2021 to 07 OCT 2021