

VORTAC BYP 114.6 Chan 93	APP CRS 214°	Rwy Idg TDZE Apt Elev N/A N/A 589
--	------------------------	---

VOR/DME-A
MCKINNEY NTL (TKI)

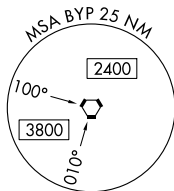
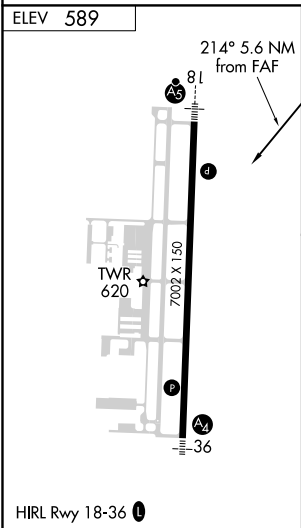
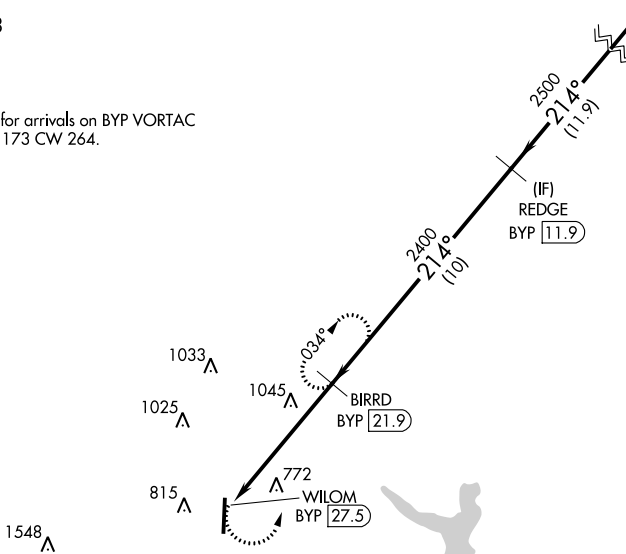
When local altimeter setting not received use Dallas Love Fld altimeter setting and increase all MDA 80 feet and Cats C and D visibility 1/4 mile.

MISSED APPROACH: Climbing left turn to 2400 on BYP VORTAC R-214 to BIRRD/BYP 21.9 DME and hold.

ATIS 119.925	REGIONAL APP CON 124.3 282.275	MCKINNEY TOWER ★ 118.825 (CTAF) 0	GND CON 121.875	CLNC DEL 121.35 (When twr closed)	UNICOM 122.95
------------------------	--	--	---------------------------	--	-------------------------

▲ 1638
Procedure NA for arrivals on BYP VORTAC airway radials 173 CW 264.

IAF
BONHAM
114.6 BYP
Chan 93



	2400 BIRRD BYP 21.9	2500 REDGE BYP 11.9	2500 BYP VORTAC	
	WILOM BYP 27.5	2400 BIRRD BYP 21.9	214° 2500	
	5.6 NM	10 NM	11.9 NM	
CATEGORY	A	B	C	D
CIRCLING	1360-1 771 (800-1)	1360-1¼ 771 (800-1¼)	1360-2¼ 771 (800-2¼)	1380-2½ 791 (800-2½)

SC-2, 09 SEP 2021 to 07 OCT 2021

SC-2, 09 SEP 2021 to 07 OCT 2021