

IZZZO SEVEN DEPARTURE (RNAV)

AL-6646 (FAA)

PHOENIX DEER VALLEY (DVT)
PHOENIX, ARIZONA

SW-4, 09 SEP 2021 to 07 OCT 2021

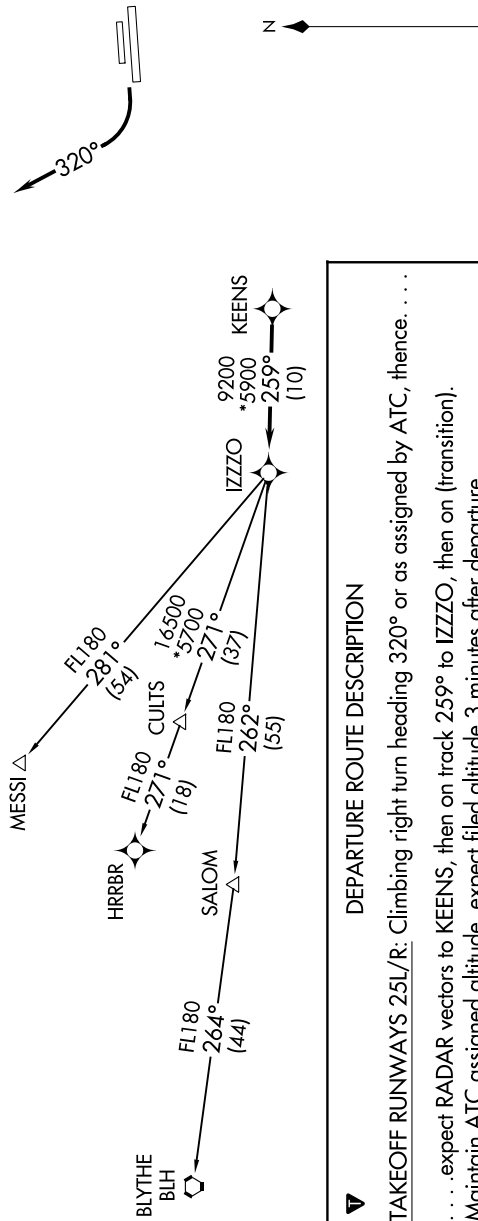
TOP ALTITUDE: ASSIGNED BY ATC

ATIS 126.5
 CLNC DEL 123.9
 GND CON 121.8
 DEER VALLEY TOWER* 118.4 (Rwy 7R-25L)
 120.2 (Rwy 7L-25R)
 PHOENIX DEP CON 120.7 239.0

RNAV 1.
 Turbojets and turboprops only.
 RADAR required.
 GPS required.
 Aircraft requesting FL220 and below must file BLYTHE TRANSITION.
 Turbojets landing LAX, file MESSI TRANSITION.
 Aircraft landing other than LAX and turboprops landing at LAX: Requesting FL240 and above, file HRRBR TRANSITION.
 Aircraft departing KGEU and KGYR ATC assigned only.

TAKEOFF MINIMUMS

Rwys 7L/R: NA - Obstacles.
 Rwys 25L/R: Standard with minimum climb of 370' per NM to 4600.



NOTE: Chart not to scale.

DEPARTURE ROUTE DESCRIPTION

TAKEOFF RUNWAYS 25L/R: Climbing right turn heading 320° or as assigned by ATC, thence...
 ... expect RADAR vectors to KEENS, then on track 259° to IZZO, then on (transition).
 Maintain ATC assigned altitude, expect filed altitude 3 minutes after departure.

- BLYTHE TRANSITION (IZZZO7.BLH)
- HRRBR TRANSITION (IZZZO7.HRRBR)
- MESSI TRANSITION (IZZZO7.MESSI)

IZZZO SEVEN DEPARTURE (RNAV)

SW-4, 09 SEP 2021 to 07 OCT 2021