

WAAS CH <b>90117</b> <b>W25A</b>	APP CRS <b>254°</b>	Rwy Idg TDZE Apt Elev	<b>7281</b> <b>1475</b> <b>1478</b>
--	------------------------	-----------------------------	---

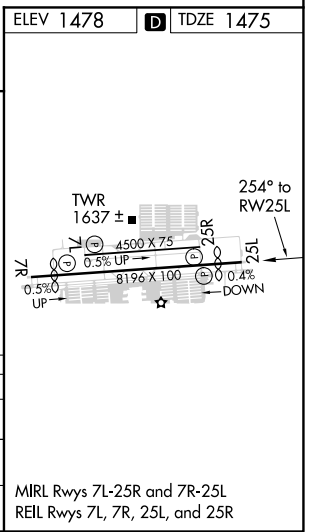
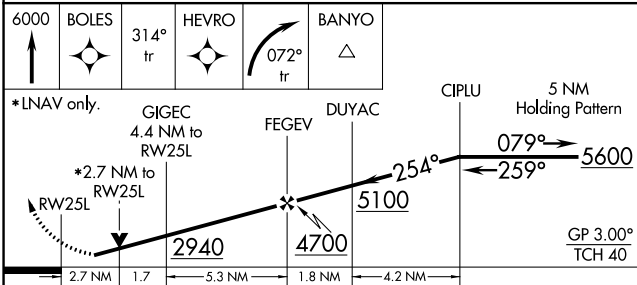
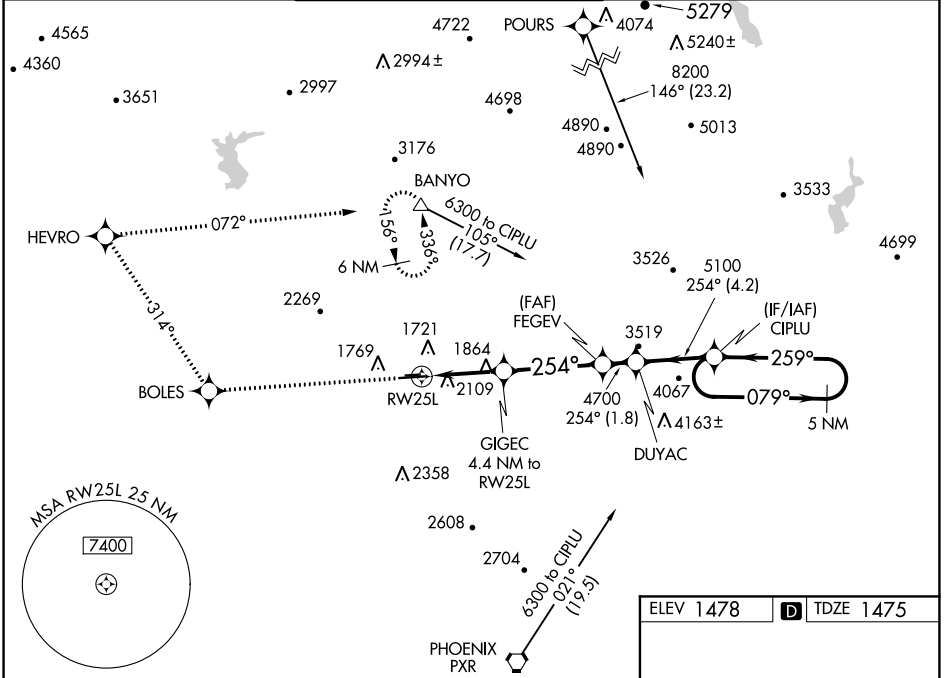
# RNAV (GPS) RWY 25L

PHOENIX DEER VALLEY (DVT)

**RNP APCH**  
 ⚠ When VGSI inop, Circling to Rwy 25R NA at night. Circling NA north of Rwy 7R-25L at night. When local altimeter setting not received, use Scottsdale altimeter setting; increase LPV all Cats DA to 1877 feet and LPV all Cats visibility ¼ SM. Increase all MDA 40 feet and Circling Cats B and C visibility ¼ SM. Rwy 25L helicopter visibility reduction below ¾ SM NA. VDP NA when using Scottsdale altimeter setting.

**MISSED APPROACH:** Climb to 6000 direct BOLES, and via 314° track to HEVRO, and right turn via 072° track to BANYO and hold.

ATIS <b>126.5</b>	PHOENIX APP CON <b>120.7 239.0</b>	DEER VALLEY TOWER * <b>118.4</b> (070°-250°) (CTAF) <b>120.2</b> (251°-069°)	GND CON <b>121.8</b>	CLNC DEL <b>123.9</b>	UNICOM <b>122.95</b>
----------------------	---------------------------------------	--	-------------------------	--------------------------	-------------------------



CATEGORY	A	B	C	D
LPV DA	1850-1¼ 375 (400-1¼)			
LNAV MDA	2360-1¼ 885 (900-1¼)	2360-2¾ 885 (900-2¾)	2360-3 885 (900-3)	
CIRCLING	2400-1¼ 922 (1000-1¼)	2420-1¼ 942 (1000-1¼)	2420-2¾ 942 (1000-2¾)	2420-3 942 (1000-3)

SW-4, 09 SEP 2021 to 07 OCT 2021

SW-4, 09 SEP 2021 to 07 OCT 2021