

GRAND CANYON  
GCN

FL180  
\*9500  
342°  
(26)

RIMMM

FL180  
\*11500  
343°  
(10)

LOFTS

FL180  
\*11500  
343°  
(36)

CARTL

FL180  
\*9300  
343°  
(20)

SNOBL

FL180  
\*8100  
343°  
(20)

QUAKY

**TOP ALTITUDE:  
ASSIGNED BY ATC**

ATIS  
126.5  
CLNC DEL  
123.9  
GND CON  
121.8  
DEER VALLEY TOWER\*  
118.4 (DEP Rwy 7R-25L)  
120.2 (DEP Rwy 7L-25R)  
PHOENIX DEP CON  
120.7 239.0

YOOPR

FL180  
\*10700  
043°  
(94)

FL180  
\*10700  
050°  
(123)

JARPA

- NOTE: RNAV 1.
- NOTE: Turbojets and turboprops only.
- NOTE: RADAR required.
- NOTE: GPS required.
- NOTE: JARPA TRANSITION ATC assigned only.
- NOTE: YOOPR TRANSITION ATC assigned only.
- NOTE: CARTL TRANSITION for FLG or PGA terminal arrivals only.
- NOTE: Aircraft departing from KGEU and KGYR ATC assigned only.

TAKEOFF MINIMUMS

Rwys 7L/R: NA-obstacles.  
Rwys 25L/R: Standard with minimum climb of 370' per NM to 4600.



DEPARTURE ROUTE DESCRIPTION

TAKEOFF RUNWAYS 25L/R: Climbing right turn heading 320° or as assigned by ATC, thence. . . .

. . . . expect RADAR vectors to QUAKY, then on track 343° to SNOBL, then on (transition). Maintain ATC assigned altitude, expect filed altitude 3 minutes after departure.

CARTL TRANSITION (SNOBL6.CARTL)

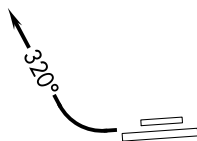
GRAND CANYON TRANSITION (SNOBL6.GCN)

JARPA TRANSITION (SNOBL6.JARPA)

RIMMM TRANSITION (SNOBL6.RIMMM)

YOOPR TRANSITION (SNOBL6.YOOPR)

NOTE: Chart not to scale.



SW-4, 09 SEP 2021 to 07 OCT 2021

SW-4, 09 SEP 2021 to 07 OCT 2021