

(YOTES6.YOTES) 18144

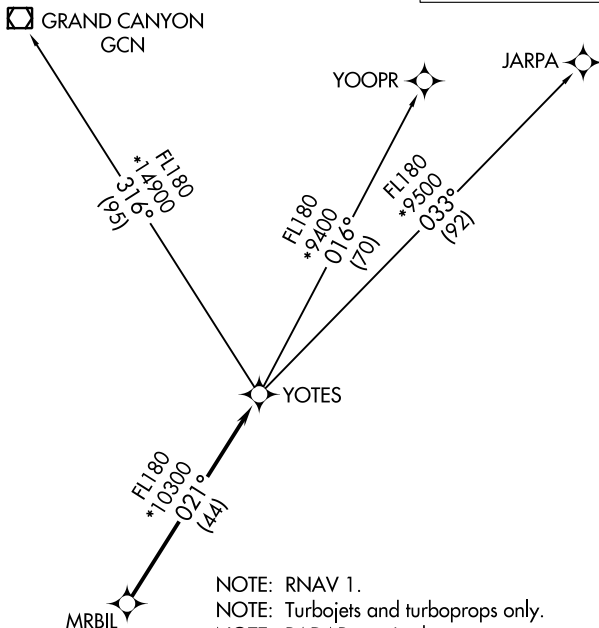
# YOTES SIX DEPARTURE (RNAV)

AL-6646 (FAA)

PHOENIX DEER VALLEY (DVT)  
PHOENIX, ARIZONA

ATIS  
126.5  
CLNC DEL  
123.9  
GND CON  
121.8  
DEER VALLEY TOWER ★  
118.4 (Rwy 7R-25L)  
120.2 (Rwy 7L-25R)  
PHOENIX DEP CON  
120.7 239.0

**TOP ALTITUDE:  
ASSIGNED BY ATC**



- NOTE: RNAV 1.
- NOTE: Turbojets and turboprops only.
- NOTE: RADAR required.
- NOTE: GPS required.
- NOTE: GCN TRANSITION ATC assigned only.
- NOTE: Aircraft departing KGEU and KGYR ATC assigned only.

### TAKEOFF MINIMUMS

- Rwys 7L/R: NA-obstacles.
- Rwys 25L/R: Standard with minimum climb of 370' per NM to 4600.

NOTE: Chart not to scale.

### DEPARTURE ROUTE DESCRIPTION

TAKEOFF RUNWAYS 25L/R: Climbing right turn heading 320° or as assigned by ATC, thence. . . .

. . . .expect RADAR vectors to MRBIL, then on track 021° to YOTES, then on (transition). Maintain ATC assigned altitude, expect filed altitude 3 minutes after departure.

GRAND CANYON TRANSITION (YOTES6.GCN)

JARPA TRANSITION (YOTES6.JARPA)

YOOPR TRANSITION (YOTES6.YOOPR)

# YOTES SIX DEPARTURE (RNAV)

(YOTES6.YOTES) 24MAY18

PHOENIX, ARIZONA  
PHOENIX DEER VALLEY (DVT)

SW-4, 09 SEP 2021 to 07 OCT 2021

SW-4, 09 SEP 2021 to 07 OCT 2021