

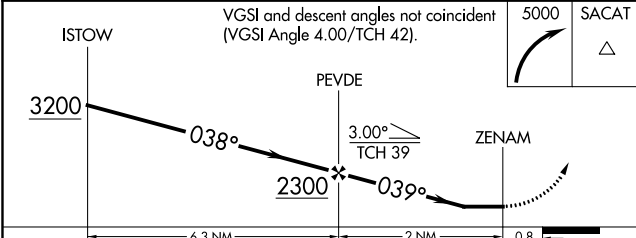
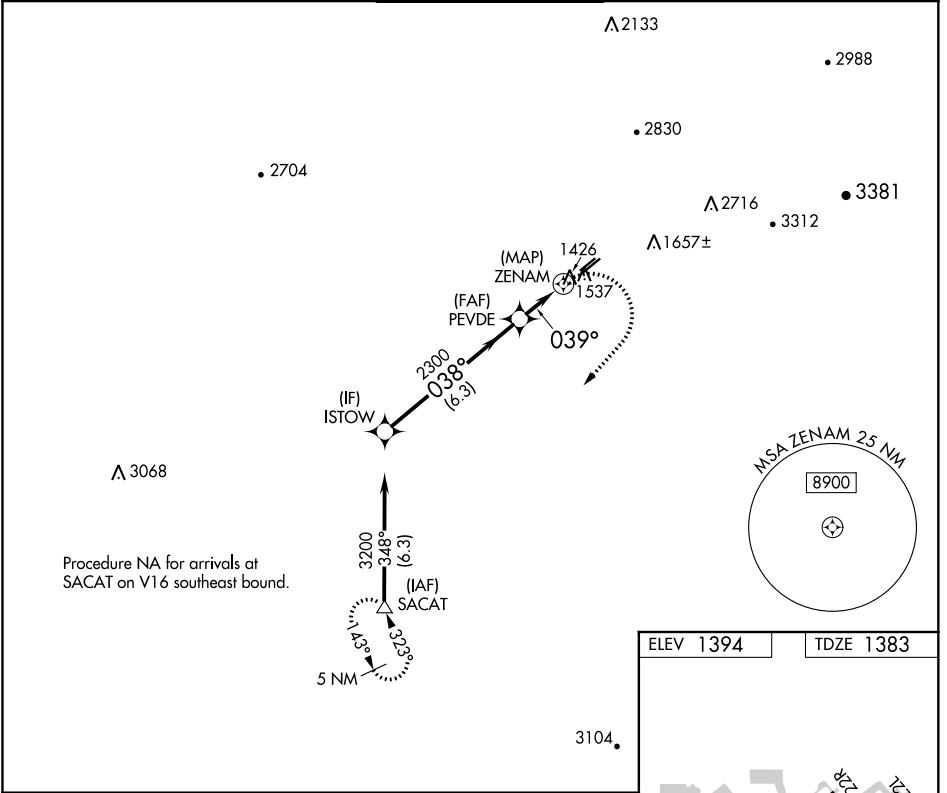
WAAS CH 56625 W04A	APP CRS 039°	Rwy Idg TDZE Apt Elev	3799 1383 1394
--	------------------------	-----------------------------	---

RNAV (GPS) RWY 4L

FALCON FLD (F'F'Z)

RNP APCH.		MISSED APPROACH: Climbing right turn to 5000 direct SACAT and hold, continue climb-in-hold to 5000.		
Rwy 4L helicopter visibility reduction below 1 SM NA.				

ATIS 118.25	PHOENIX APP CON 120.7 239.0	FALCON TOWER * 124.6 (CTAF) 0	GND CON 121.3	UNICOM 122.95
-----------------------	---------------------------------------	--	-------------------------	-------------------------



ELEV 1394	TDZE 1383
-----------	-----------

REIL Rwy 4L, 4R, 22L and 22R
MIRL Rwy 4R-22L **0**
MIRL Rwy 4L-22R

SW-4, 09 SEP 2021 to 07 OCT 2021

SW-4, 09 SEP 2021 to 07 OCT 2021