

IZZZO SEVEN DEPARTURE (RNAV)

AL-6648 (FAA)

PHOENIX GOODYEAR (GYR)
GOODYEAR, ARIZONA

SW-4, 09 SEP 2021 to 07 OCT 2021

TOP ALTITUDE: ASSIGNED BY ATC

ATIS 118.35
GND CON 121.7
GOODYEAR TOWER ★
120.1 239.3
LUKE DEP CON ★
125.45 263.125
PHOENIX DEP CON
120.7 239.0

RNAV 1.

NOTE: Turbojets and turboprops only.

NOTE: RADAR required.

NOTE: GPS required.

NOTE: Aircraft requesting FL220 and below must file BLYTHE TRANSITION.

NOTE: Turbojets landing LAX, file MESSI TRANSITION.

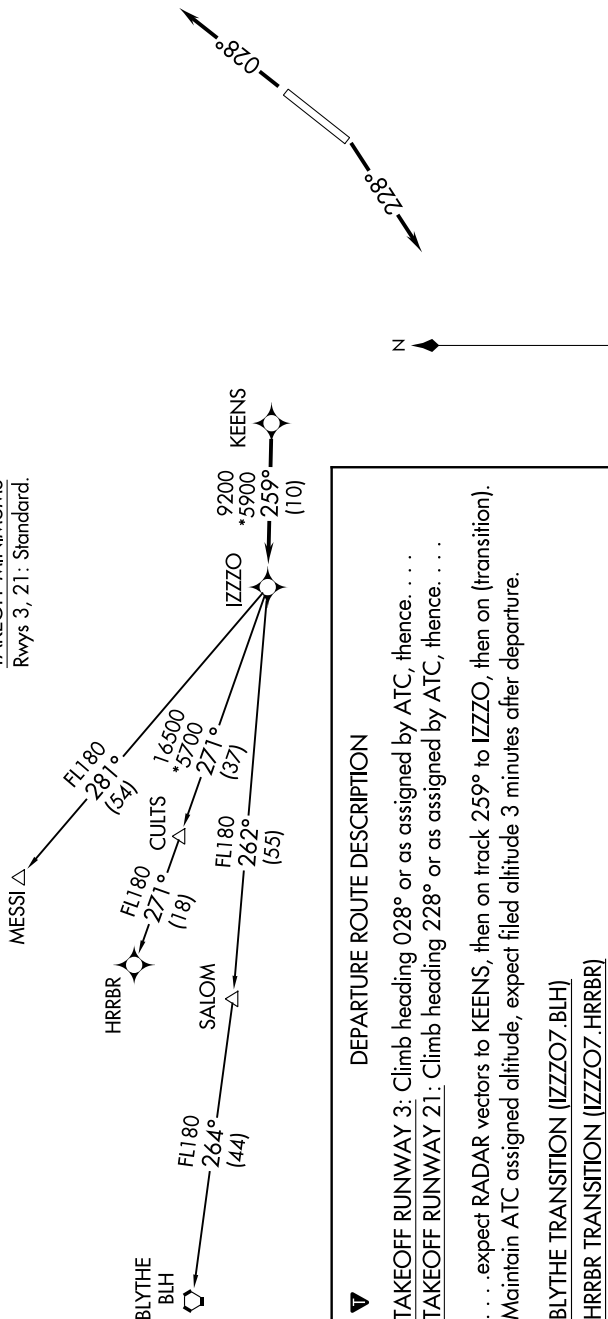
NOTE: Aircraft landing other than LAX and turboprops landing at LAX:

Requesting FL240 and above, file HRRBR TRANSITION.

NOTE: Aircraft departing KGEU and KGYR ATC assigned only.

TAKEOFF MINIMUMS

Rwys 3, 21: Standard.



DEPARTURE ROUTE DESCRIPTION

TAKEOFF RUNWAY 3: Climb heading 028° or as assigned by ATC, thence. . .

TAKEOFF RUNWAY 21: Climb heading 228° or as assigned by ATC, thence. . .

. . . expect RADAR vectors to KEENS, then on track 259° to IZZO, then on (transition).
Maintain ATC assigned altitude, expect filed altitude 3 minutes after departure.

BLYTHE TRANSITION (IZZZO7.BLH)

HRRBR TRANSITION (IZZZO7.HRRBR)

MESSI TRANSITION (IZZZO7.MESSI)

NOTE: Chart not to scale.

IZZZO SEVEN DEPARTURE (RNAV)

SW-4, 09 SEP 2021 to 07 OCT 2021