

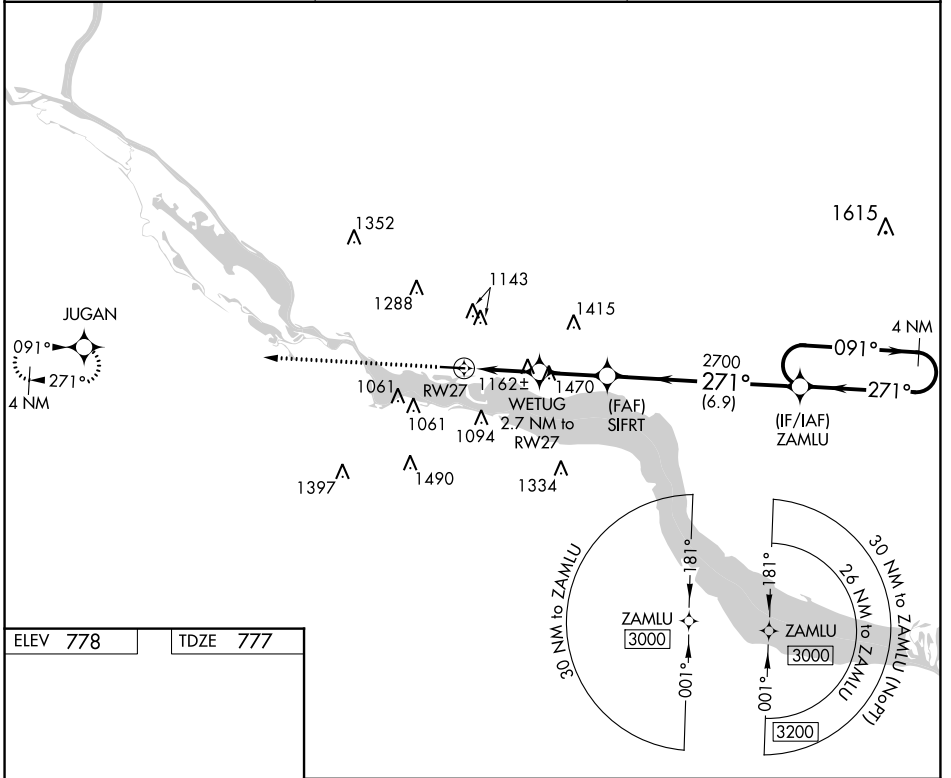
APP CRS	Rwy Idg	5010
271°	TDZE	777
	Apt Elev	778

RNAV (GPS) RWY 27

RED WING RGNL (RGK)

<p>⚠ DME/DME RNP-0.3 NA. VDP NA with South St. Paul altimeter setting. When local altimeter setting not received, use South St. Paul altimeter setting; increase all MDA 80 feet and visibility LNAV Cat C and Circling Cat C ½ SM and Circling Cat A/B ¼ SM. Helicopter visibility reduction below ¾ SM NA. Inop table does not apply to LNAV Cat C.</p>	<p>ODALS</p>	<p>MISSED APPROACH: Climb to 3000 direct JUGAN and hold.</p>
--	--------------	--

AWOS-3 119.25	MINNEAPOLIS APP CON 121.2 335.65	UNICOM 123.05 (CTAF)
-------------------------	--	--------------------------------



ELEV 778	TDZE 777
----------	----------

Diagram of RWY 27 showing dimensions: 5010 x 100. Orientation: 271° to RW27.

	<p>3000</p>			
	<p>4 NM Holding Pattern</p>			
<p>WETUG 2.7 NM to RW27</p>	<p>SIFRT</p>	<p>ZAMLU</p>		<p>4 NM Holding Pattern</p>
<p>2.1 NM to RW27</p>	<p>0.6 NM</p>	<p>2.4 NM</p>	<p>6.9 NM</p>	<p>3000</p>
<p>RW27</p>	<p>1800</p>	<p>2700</p>	<p>271°</p>	<p>091°</p>
<p>2.1 NM</p>	<p>0.6 NM</p>	<p>2.4 NM</p>	<p>6.9 NM</p>	<p>3000</p>
<p>CATEGORY</p>	<p>A</p>	<p>B</p>	<p>C</p>	<p>D</p>
<p>LNAV MDA</p>	<p>1520-¾ 743 (800-¾)</p>	<p>1520-1¼ 743 (800-1¼)</p>	<p>1520-2 743 (800-2)</p>	<p>NA</p>
<p>CIRCLING</p>	<p>1520-1</p>	<p>742 (800-1)</p>	<p>1640-2½ 862 (900-2½)</p>	<p>NA</p>

NC-1, 09 SEP 2021 to 07 OCT 2021

NC-1, 09 SEP 2021 to 07 OCT 2021