

WAAS CH <b>99326</b> <b>W27A</b>	APP CRS <b>272°</b>	Rwy Idg <b>4699</b> TDZE <b>773</b> Apt Elev <b>774</b>
--	------------------------	---

# RNAV (GPS) RWY 27

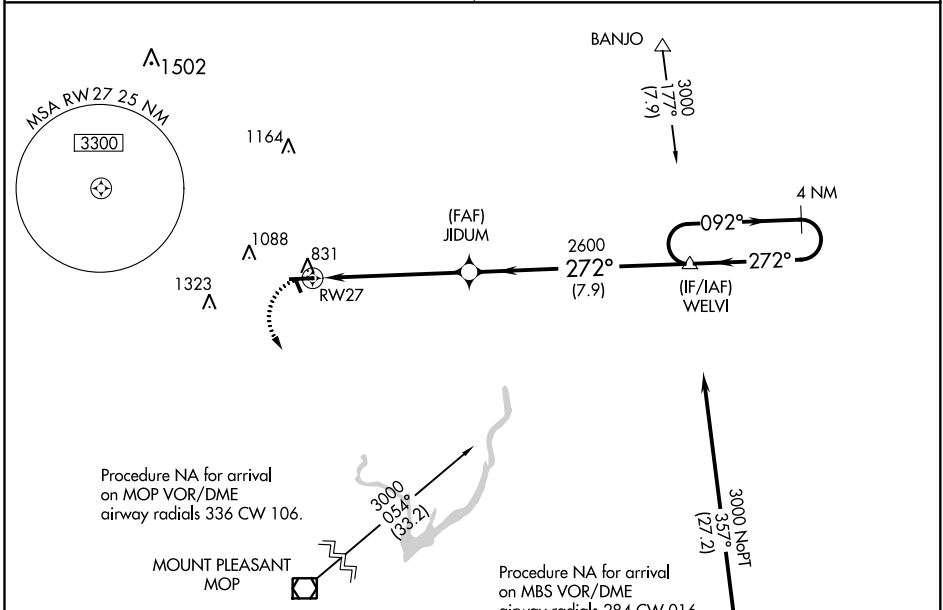
GLADWIN ZETTEL MEML (GDW)

RNP APCH.

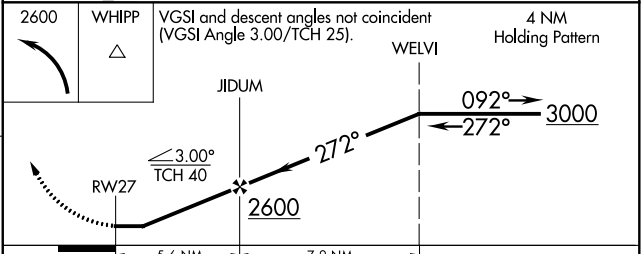
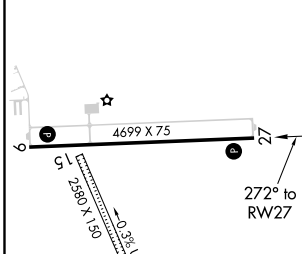
▼ Circling NA to Rwy 15 and 33. Rwy 27 helicopter visibility reduction below 1 SM NA. DME/DME RNP-0.3 NA. Procedure NA at night. Use Mount Pleasant altimeter setting; when not received, use Midland altimeter setting and increase all MDA 20 feet; increase LP and LNAV Cats C/D visibility 1/8 SM.

▲ MISSED APPROACH: Climbing left turn to 2600 direct WHIPP and hold.

GREAT LAKES APP CON * <b>126.45 235.625</b>	UNICOM <b>122.8 (CTAF) 0</b>
--	---------------------------------



ELEV 774	TDZE 773
----------	----------



CATEGORY		A	B	C	D
LP	MDA	1280-1	507 (600-1)	1280-1 3/8	507 (600-1 1/8)
LNAV	MDA	1280-1	507 (600-1)	1280-1 3/8	507 (600-1 1/8)
CIRCLING		1420-1	1500-1	1520-2 1/4	1700-3
		646 (700-1)	726 (800-1)	746 (800-2 1/4)	926 (1000-3)

MIRL Rwy 9-27 0  
REIL Rwy 9 and 27 0

EC-1, 09 SEP 2021 to 07 OCT 2021

EC-1, 09 SEP 2021 to 07 OCT 2021