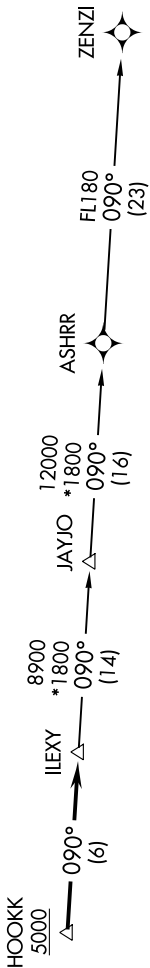


UNICOM (CTAF)
123.0
AUSTIN DEP CON
119.0 370.85

TOP ALTITUDE:
ASSIGNED BY ATC

TAKEOFF MINIMUMS:

Rwy 16: 500-2³/₄ or Standard with minimum climb of 265' per NM to 1500.
Rwy 34: Standard.



- NOTE: RADAR required.
- NOTE: DME/DME/IRU or GPS required.
- NOTE: RNAV 1.
- NOTE: Houston terminal area arrivals expect routing from ILEXY.
- NOTE: JAYJO transition to join V306 only.
- NOTE: Takeoff Rwy 16 requires a climb to 1700 on heading 165° prior to turning for obstacle avoidance.

NOTE: Chart not to scale.

DEPARTURE ROUTE DESCRIPTION

TAKEOFF RUNWAY 16: Climb on heading 165° to 1700, then as assigned by ATC for vectors to cross HOOKK at or above 5000, thence. . . .

TAKEOFF RUNWAY 34: Climb on heading 345° or as assigned by ATC for vectors to cross HOOKK at or above 5000, thence. . . .
 . . . on track 090° to ILEXY, then on transition. Maintain altitude assigned by ATC. Expect filed altitude 10 minutes after departure.

JAYJO TRANSITION (ILEXY3.JAYJO)
ZENZI TRANSITION (ILEXY3.ZENZI)