

NDB/DME GAM 369 Chan 92 (114.5)	APP CRS 345°	Rwy Idg 4500 TDZE 26 Apt Elev 27
---	------------------------	---

NDB/DME RWY 34

GAMBELL(GAM)(PAGM)

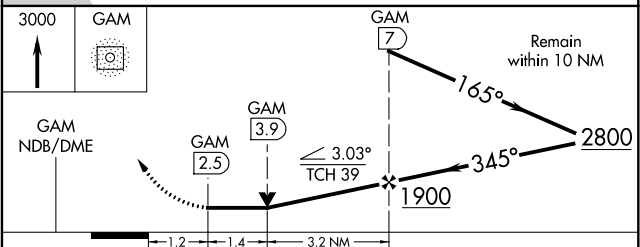
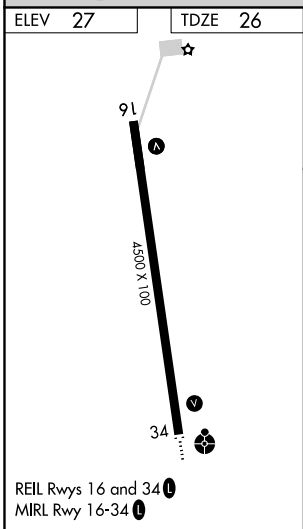
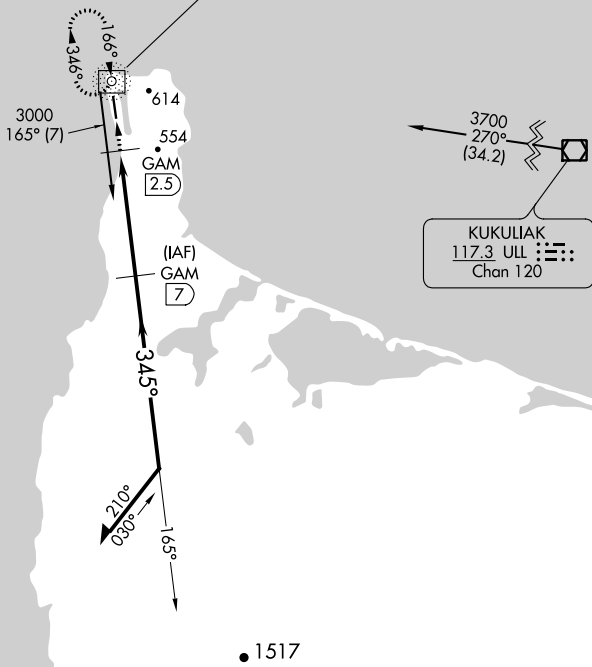
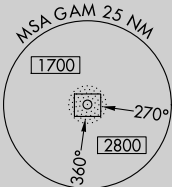
<p>-27°C</p>	<p>ODALS</p>	<p>MISSED APPROACH: Climb to 3000 direct GAM NDB/DME and in GAM NDB/DME holding pattern.</p>
	<p>Circling NA northeast of Rwy 16-34.</p>	

<p>AWOS-3P 125.9</p>	<p>ANCHORAGE CENTER 132.2 281.4</p>	<p>NOME RADIO 122.0</p>	<p>CTAF 122.7</p>
---------------------------------	--	------------------------------------	------------------------------

CAUTION: GAM aural ident should be monitored to ensure against possible reception of foreign stations.

GAMBELL
369 GAM
DME Chan 92 (114.5)

KUKULIAK
117.3 ULL
Chan 120



CATEGORY	A	B	C	D
S-34	880-1½ 854 (900-1½)	880-2½ 854 (900-2½)	880-2¾ 854 (900-2¾)	880-2¾ 854 (900-2¾)
CIRCLING	880-1½ 853 (900-1½)	880-2½ 853 (900-2½)	880-2¾ 853 (900-2¾)	880-2¾ 853 (900-2¾)