

WAAS CH 86635 W16A	APP CRS 164°	Rwy Idg TDZE 29 Apt Elev 29
--	------------------------	---

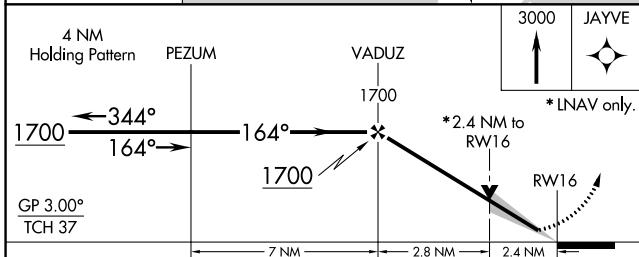
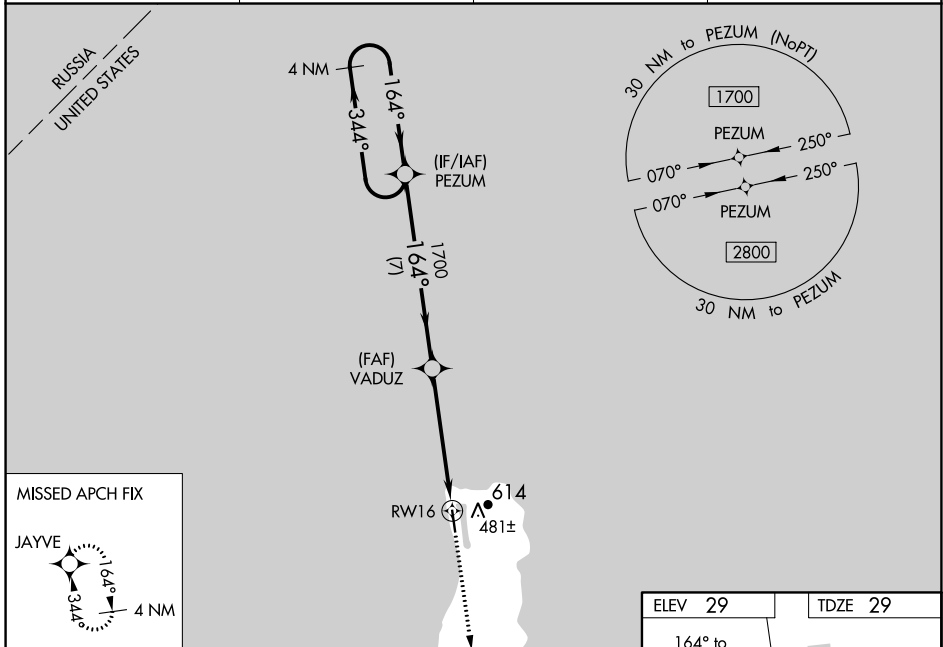
RNAV (GPS) RWY 16

GAMBELL (GAM) (PAGM)

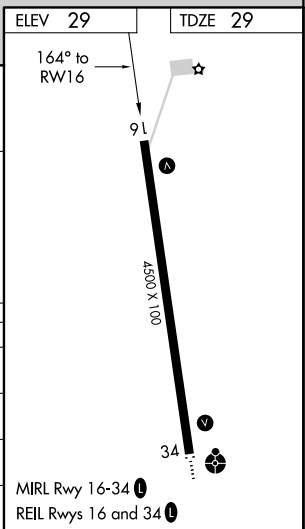
Baro-VNAV NA when using Savoonga altimeter setting. For uncompensated Baro-VNAV systems, LNAV/VNAV NA below -20°C (-4°F) or above 54°C (130°F). Circling NA northeast of Rwy 16-34. DME/DME RNP-0.3 NA. VDP NA with Savoonga altimeter setting. When local altimeter setting not received, use Savoonga altimeter setting and increase all DA 82 feet and MDA 100 feet. Increase LPV all Cats visibility ¼ mile. Increase LNAV/VNAV all Cats visibility ⅓ mile. Increase LNAV Cat A visibility ¼ mile. Increase Circling Cat A and C visibility ¼ mile, Cat D visibility ½ mile.

MISSED APPROACH:
Climb to 3000 direct JAYVE and hold.

AWOS-3P 125.9	ANCHORAGE CENTER 132.2 281.4	NOME RADIO 122.0	CTAF 122.7 0
-------------------------	--	----------------------------	------------------------



CATEGORY	A	B	C	D
LPV DA	279-7/8 250 (300-7/8)			
LNAV/VNAV DA	578-17/8 549 (600-17/8)			
LNAV MDA	820-1 791 (800-1)	820-1¼ 791 (800-1¼)	820-2½	791 (800-2½)
CIRCLING	820-1 791 (800-1)	820-1¼ 791 (800-1¼)	860-2½	831 (900-2½)



AK, 12 AUG 2021 to 07 OCT 2021

AK, 12 AUG 2021 to 07 OCT 2021