

WAAS CH <b>62917</b> <b>W27A</b>	APP CRS <b>272°</b>	Rwy Idg TDZE Apt Elev	<b>4000</b> <b>839</b> <b>842</b>
--	------------------------	-----------------------------	---

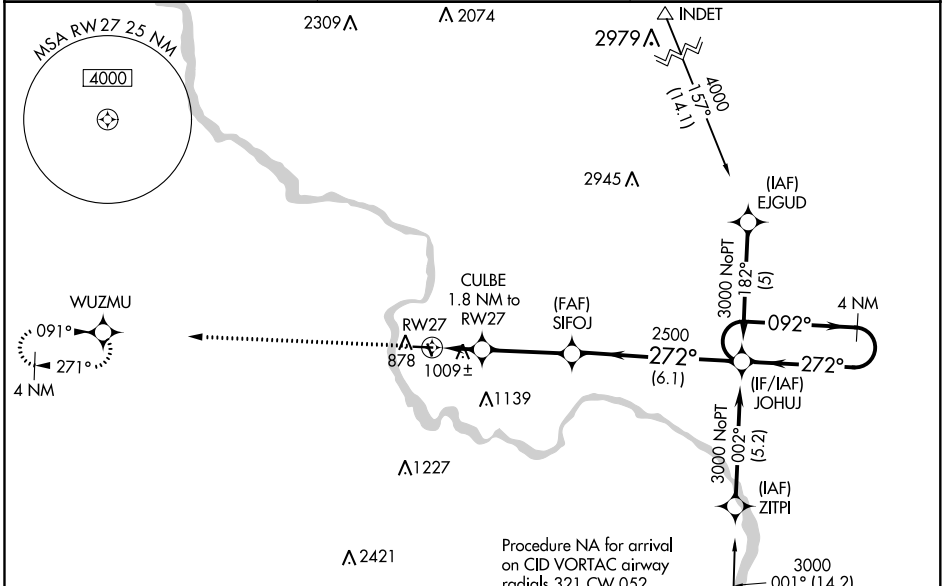
# RNAV (GPS) RWY 27

VINTON VETERANS MEML AIRPARK (VTI)

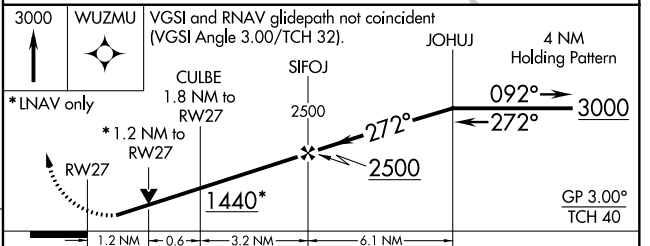
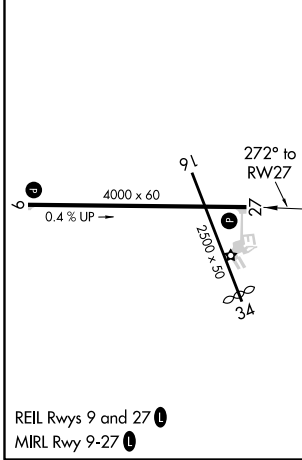
**⚠** When VGSI inoperative, Circling Rwy 9 NA at night. For uncompensated Baro-VNAV systems, LNAV/VNAV NA below -16°C (4°F) or above 54°C (130°F). DME/DME RNP-0.3 NA. Visibility reduction by helicopters NA. When local altimeter setting not received, use Independence altimeter setting and increase all DA 54 feet and all MDA 60 feet, and increase LNAV/VNAV all Cats visibility 1/4 mile. Baro-VNAV and VDP NA when using Independence altimeter setting.

MISSED APPROACH: Climb to 3000 direct WUZMU and hold.

AWOS-3 <b>120.075</b>	CEDAR RAPIDS APP CON * <b>134.05 266.8</b>	UNICOM <b>122.8 (CTAF)</b>
--------------------------	---	-------------------------------



ELEV 842	TDZE 839
----------	----------



CATEGORY	A	B	C	D
LPV DA	1089-1	250 (300-1)		NA
LNAV/VNAV DA	1323-1¾	484 (500-1¾)		NA
LNAV MDA	1260-1	421 (500-1)		NA
CIRCLING	1320-1	478 (500-1)		NA

NC-3, 09 SEP 2021 to 07 OCT 2021

NC-3, 09 SEP 2021 to 07 OCT 2021