

APP CRS 091°	Rwy Idg 4000
	TDZE 836
	Apt Elev 842

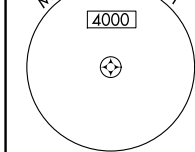
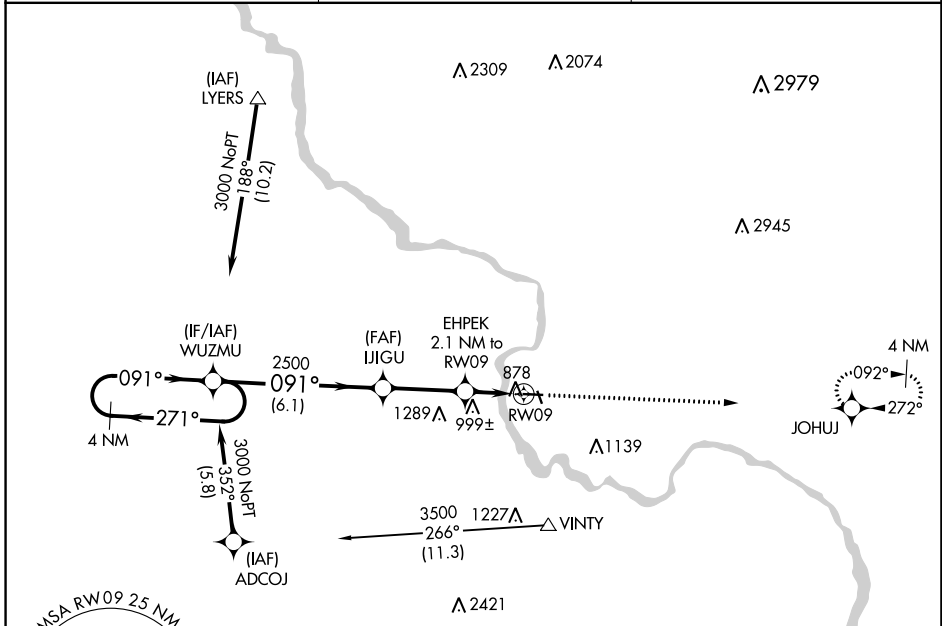
RNAV (GPS) RWY 9

VINTON VETERANS MEML AIRPARK (VTI)

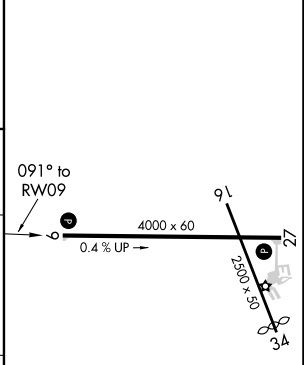
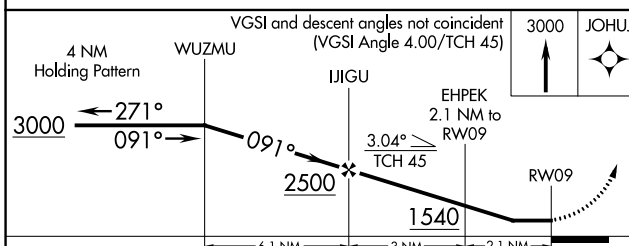
⚠ When VGSI inoperative, Straight-in/Circling Rwy 9 procedure NA at night.
⚠ DME/DME RNP-0.3 NA. Visibility reduction by helicopters NA. When local altimeter setting not received, use Independence altimeter setting and increase all MDA 60 feet.

MISSED APPROACH: Climb to 3000 direct JOHUJ and hold.

AWOS-3 120.075	CEDAR RAPIDS APP CON * 134.05 266.8	UNICOM 122.8 (CTAF)
--------------------------	---	-------------------------------



ELEV 842	TDZE 836
----------	----------



CATEGORY	A	B	C	D
LNVA MDA	1260-1	424 (500-1)		NA
CIRCLING	1320-1	478 (500-1)		NA

REIL Rwy 9 and 27
MIRL Rwy 9-27

NC-3, 09 SEP 2021 to 07 OCT 2021

NC-3, 09 SEP 2021 to 07 OCT 2021