

| | | |
|------------------------|--------------------------|---|
| APP CRS 194° | Rwy Idg TDZE Apt Elev | N/A N/A 5915 |
|------------------------|--------------------------|---|

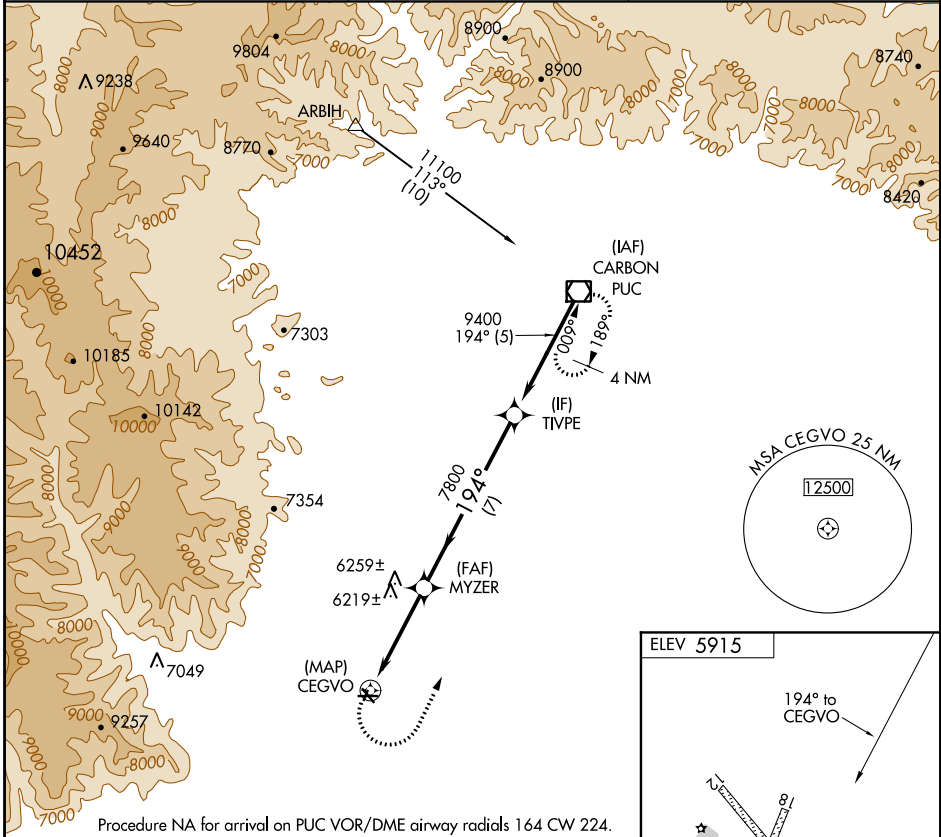
RNAV (GPS)-C

HUNTINGTON MUNI. (69V)

NA Rwy 8, 12, 26, 30 helicopter visibility reduction below 1 SM NA.
DME/DME RNP-0.3 NA. Procedure NA at night. Use Price altimeter setting; when not received, procedure NA.

MISSED APPROACH: Climbing left turn to 10000 direct PUC VOR/DME and hold.

| | | |
|----------------------------|---|-------------------------------|
| PUC ASOS 135.425 | SALT LAKE CENTER 133.9 370.85 | UNICOM 122.8 (CTAF) |
|----------------------------|---|-------------------------------|



SW-4, 09 SEP 2021 to 07 OCT 2021

SW-4, 09 SEP 2021 to 07 OCT 2021

Procedure NA for arrival on PUC VOR/DME airway radials 164 CW 224.

