

VOR/DME SHB <b>112.0</b> Chan <b>57</b>	APP CRS <b>142°</b>	Rwy Idg TDZE Apt Elev <b>N/A</b> <b>N/A</b> <b>912</b>
---	------------------------	---

**VOR-A**  
GREENSBURG MUNI (I34)

**NA** Use Columbus Muni altimeter setting; if not received, use Indianapolis Intl altimeter setting and increase all MDA's 40 feet.

MISSED APPROACH: Climb to 2000 then climbing right turn to 2700 via SHB R-142 to APODD INT/SHB 18 DME/RADAR and hold.

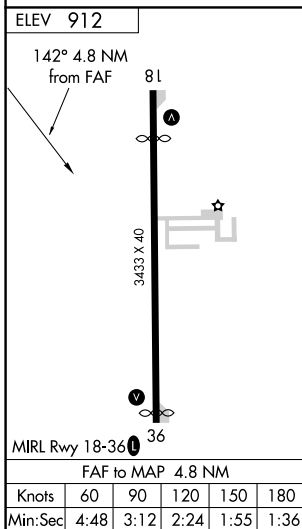
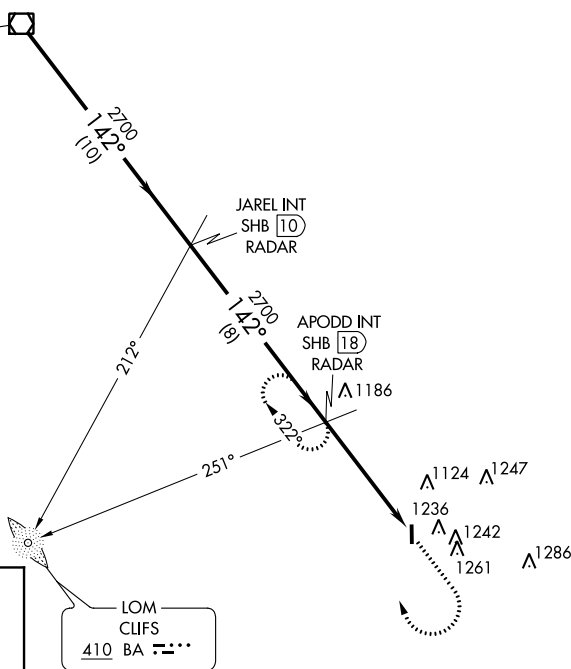
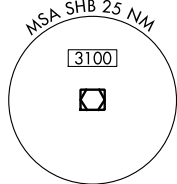
BAK AWOS-3 <b>119.75</b>	INDIANAPOLIS APP CON <b>127.15</b>	CTAF <b>122.90</b>
-----------------------------	---------------------------------------	-----------------------

**A** 1542

**ADF, DME or RADAR REQUIRED**

IAF  
SHELBYVILLE  
112.0 SHB  
Chan 57

Procedure NA for arrival on SHB VOR/DME airway radials 124 CW 171.



	2000	2700	SHB R-142	APODD INT
	↑	↷		
SHB VOR/DME	JAREL INT SHB 10 RADAR	APODD INT SHB 18 RADAR	SHB 22.8	
2700	2700	2700		
	10 NM	8 NM	4.8 NM	
CATEGORY	A	B	C	D
<b>C</b> CIRCLING	1680-1 768 (800-1)	1680-1¼ 768 (800-1¼)	1680-2¼ 768 (800-2¼)	NA

EC-2, 09 SEP 2021 to 07 OCT 2021

EC-2, 09 SEP 2021 to 07 OCT 2021