

WAAS CH 99523 W17A	APP CRS 176°	Rwy Idg TDZE Apt Elev	4000 618 618
--	------------------------	-----------------------------	---

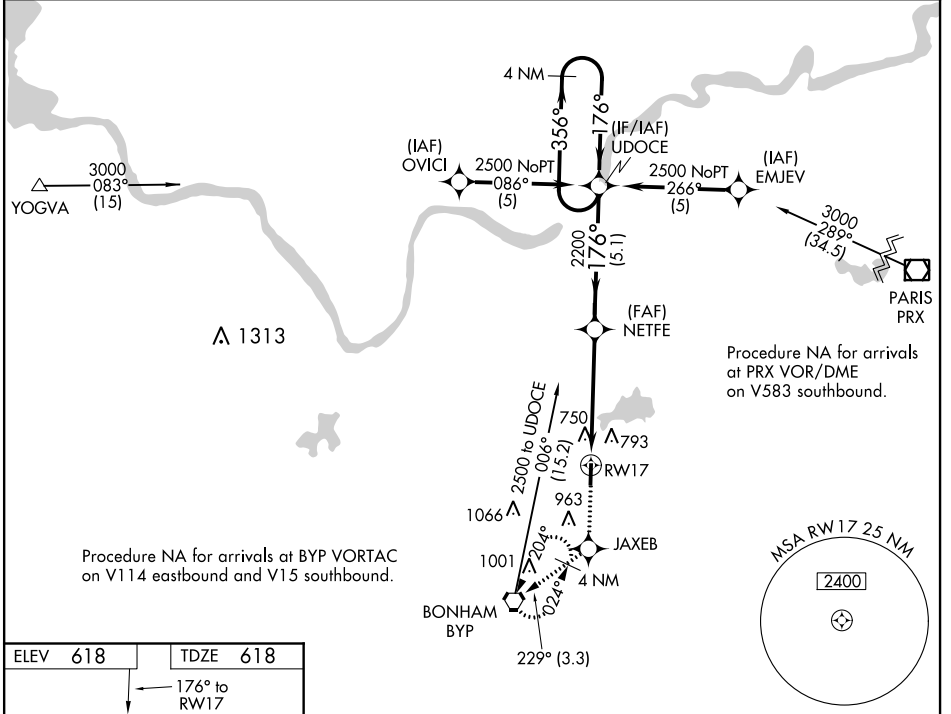
RNAV (GPS) RWY 17

JONES FIELD (F00)

NA Baro-VNAV NA. When local altimeter setting not received, use Durant altimeter setting.
DME/DME RNP-0.3 NA.

MISSED APPROACH: Climb to 2500 direct JAXEB and on track 229° to BYP VORTAC and hold.

AWOS-3 PT 118.05	FORT WORTH CENTER 127.6 254.3	UNICOM 122.8(CTAF) 0
----------------------------	---	--------------------------------

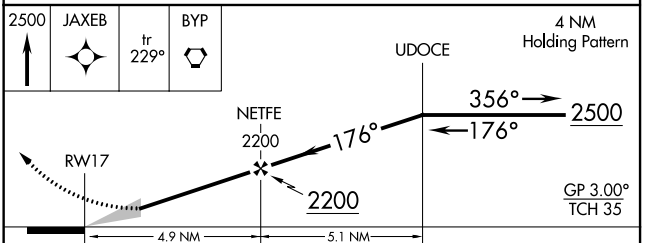
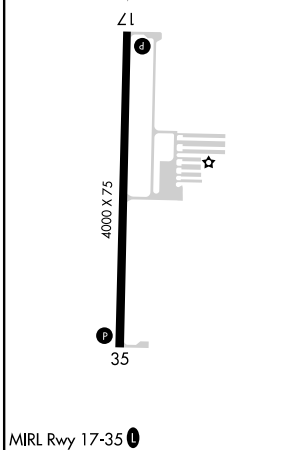


SC-2, 09 SEP 2021 to 07 OCT 2021

SC-2, 09 SEP 2021 to 07 OCT 2021

ELEV 618	TDZE 618
----------	----------

176° to RWY 17



CATEGORY	A	B	C	D
LPV DA	906-1	288 (300-1)		NA
LNAV/VNAV DA	1030-1 ³ / ₈	412 (500-1 ³ / ₈)		NA
LNAV MDA	1180-1	562 (600-1)		NA
CIRCLING	1240-1 622 (700-1)	1400-1 782 (800-1)		NA