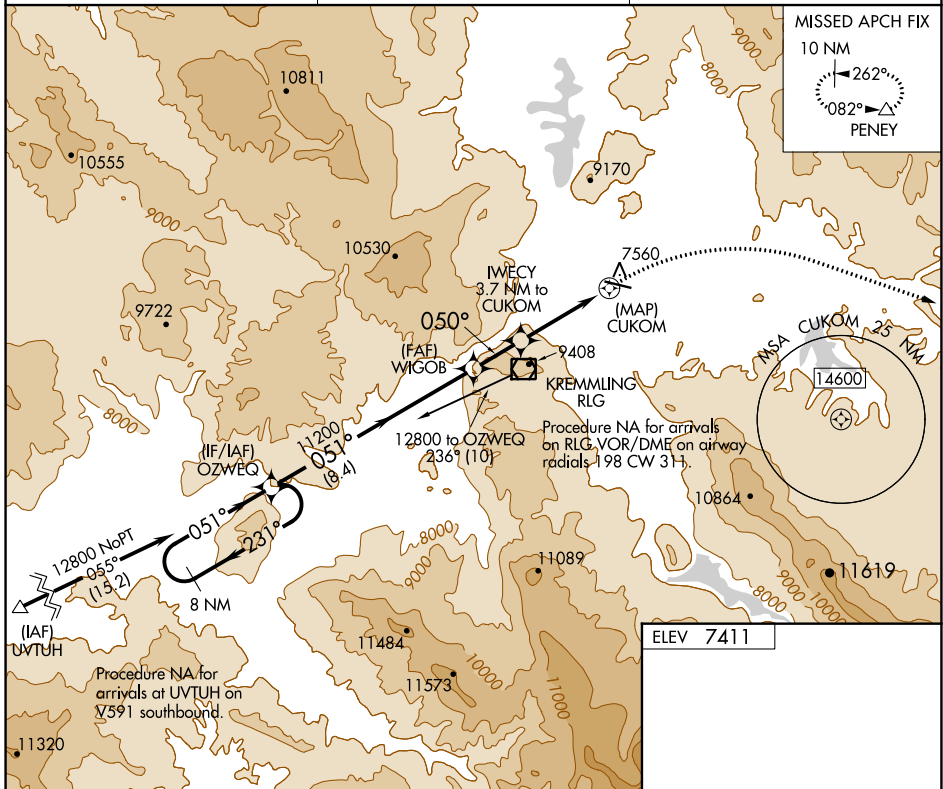


APP CRS	Rwy Idg	N/A
050°	TDZE	N/A
	Apt Elev	7411

**RNAV (GPS)-B**  
MC ELROY AIRFIELD (20V)

RNP APCH.	MISSED APPROACH: Climbing right turn to 15600 direct PENEY and hold, continue climb-in-hold to 15600.
<p>When local altimeter setting not received, procedure NA. Night Landing Rwy 9 NA. Circling NA south of Rwy 9-27. -19°C</p>	

AWOS-3 <b>118.425</b>	DENVER CENTER <b>128.65 282.2</b>	UNICOM <b>122.8 (CTAF)</b>
--------------------------	--------------------------------------	-------------------------------



SW-1, 09 SEP 2021 to 07 OCT 2021

SW-1, 09 SEP 2021 to 07 OCT 2021

<p>8 NM Holding Pattern</p>	15600	PENEY											
<p>Procedure NA for arrivals at UVTUH on 17591 southbound.</p>	<p>ELEV 7411</p>												
<table border="1"> <thead> <tr> <th>CATEGORY</th> <th>A</th> <th>B</th> <th>C</th> <th>D</th> </tr> </thead> <tbody> <tr> <td> CIRCLING</td> <td>9440-1¼ 2029 (2100-1¼)</td> <td>9440-1½ 2029 (2100-1½)</td> <td>9440-3 2029 (2100-3)</td> <td>NA</td> </tr> </tbody> </table>	CATEGORY	A	B	C	D	CIRCLING	9440-1¼ 2029 (2100-1¼)	9440-1½ 2029 (2100-1½)	9440-3 2029 (2100-3)	NA	<p>REIL Rwys 9 and 27 </p> <p>MIRL Rwy 9-27 </p>		
CATEGORY	A	B	C	D									
CIRCLING	9440-1¼ 2029 (2100-1¼)	9440-1½ 2029 (2100-1½)	9440-3 2029 (2100-3)	NA									