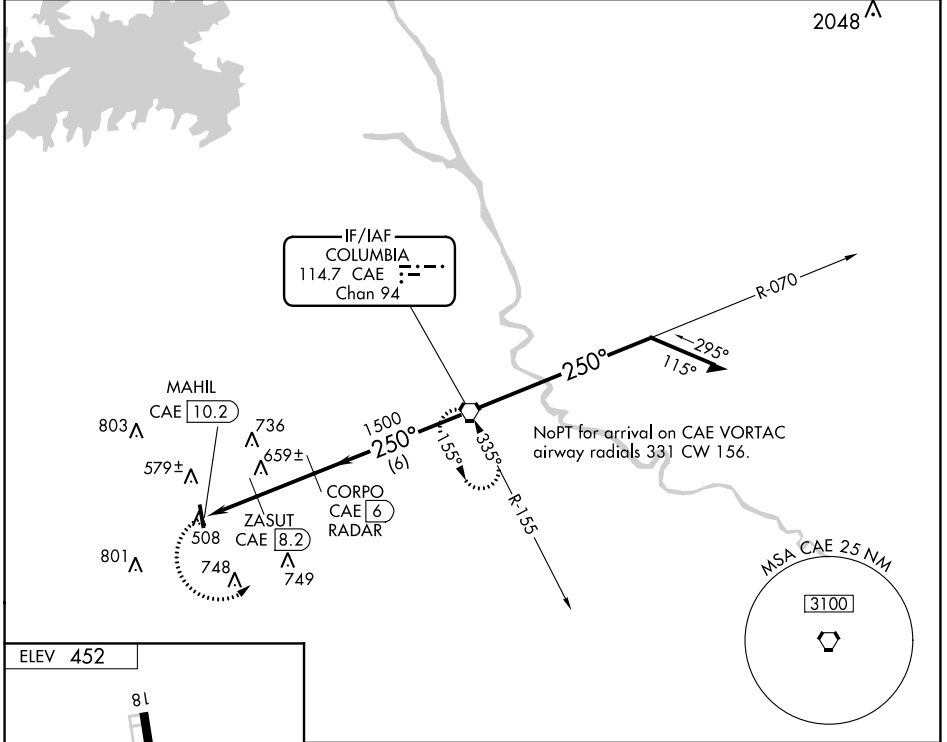


VORTAC CAE 114.7 Chan 94	APP CRS 250°	Rwy Idg TDZE Apt Elev	N/A N/A 452
--	------------------------	-----------------------------	--

VOR-A
LEXINGTON COUNTY (6J0)

DME or RADAR required.		MISSED APPROACH: Climbing left turn to 2100 direct CAE VORTAC and hold.
Use Columbia Metro altimeter setting; when not received, use Jim Hamilton L B Owens altimeter setting and increase all MDA 20 feet.		

CAE ASOS 120.15	COLUMBIA APP CON 124.15 338.2	UNICOM 123.0 (CTAF)
---------------------------	---	-------------------------------



ELEV 452					
MIRL Rwy 18-36					
FAF to MAP 4.2 NM					
Knots	60	90	120	150	180
Min:Sec	4:12	2:48	2:06	1:41	1:24

2100	CAE	Remain within 10 NM			
		*1080 when using Jim Hamilton L B Owens altimeter setting.			
CATEGORY	A	B	C	D	
CIRCLING	1060-1 608 (700-1)		NA		
ZASUT FIX MINIMUMS					
CIRCLING	940-1 488 (500-1)	960-1 508 (600-1)	NA		

SE-2, 09 SEP 2021 to 07 OCT 2021

SE-2, 09 SEP 2021 to 07 OCT 2021