

LOC/DME I-JVW 108.55 Chan 22 (Y)	APP CRS 124°	Rwy Idg 5499 TDZE 241 Apt Elev 247
--	------------------------	---

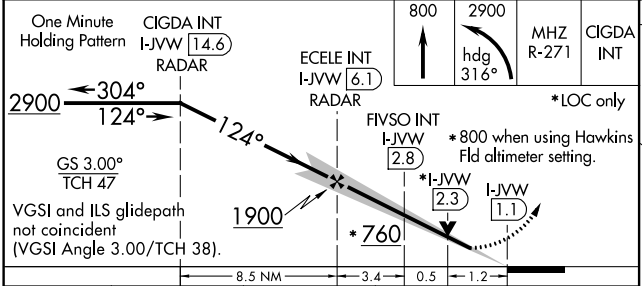
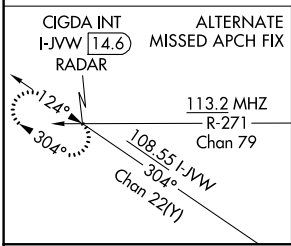
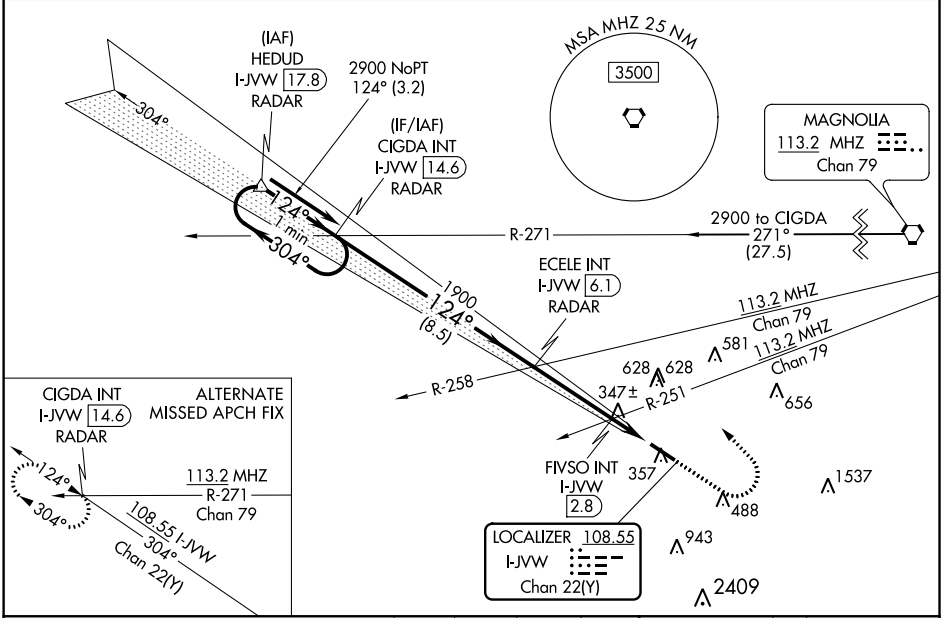
ILS or LOC RWY 12

JOHN BELL WILLIAMS (JVW)

▼ VDP NA with Hawkins Fld altimeter setting. Circling NA for Cat D southwest of Rwy 12-30.
▲ When local altimeter setting not received, use Hawkins Fld altimeter setting: increase all DA 36 feet, all MDA 40 feet, S-LOC 12 Cat C and D visibilities ¼ mile, and Circling Cat C and D visibilities ¼ mile, increase FIVSO fix minimums S-LOC 12 Cat C and D visibilities ¼ mile and Circling Cat C and D visibilities ¼ mile.

MISSED APPROACH: Climb to 800 then climbing left turn to 2900 on heading 316° and on MHz VORTAC R-271 to CIGDA INT/I-JVW 14.6 DME and hold.

AWOS-3PT 118.675	JACKSON APP CON ★ 125.25 319.2	UNICOM 123.0 (CTAF) 📞
----------------------------	--	--



CATEGORY	A	B	C	D
S-ILS 12	441-3/4 200 (200-3/4)			
S-LOC 12	760-1	519 (600-1)	760-1 3/8	519 (600-1 3/8)
C CIRCLING	800-1	553 (600-1)	733 (800-2)	733 (800-2 1/4)
FIVSO FIX MINIMUMS (DUAL VOR RECEIVERS OR DME REQUIRED)				
S-LOC 12	660-1	419 (500-1)	660-1 1/8	419 (500-1 1/8)
C CIRCLING	800-1	553 (600-1)	980-2	733 (800-2 1/4)

ELEV 247	TDZE 241
<p>124° 5.1 NM from FAF, 5499 X 100, 30</p>	
MIRL Rwy 12-30 📞	REIL Rwy 12 and 30 📞
FAF to MAP 5.1 NM	
Knots	60 90 120 150 180
Min:Sec	5:06 3:24 2:33 2:02 1:42

SC-4, 09 SEP 2021 to 07 OCT 2021

SC-4, 09 SEP 2021 to 07 OCT 2021