

WAAS CH 50205 W12A	APP CRS 123°	Rwy Idg 5499 TDZE 241 Apt Elev 247
--	------------------------	---

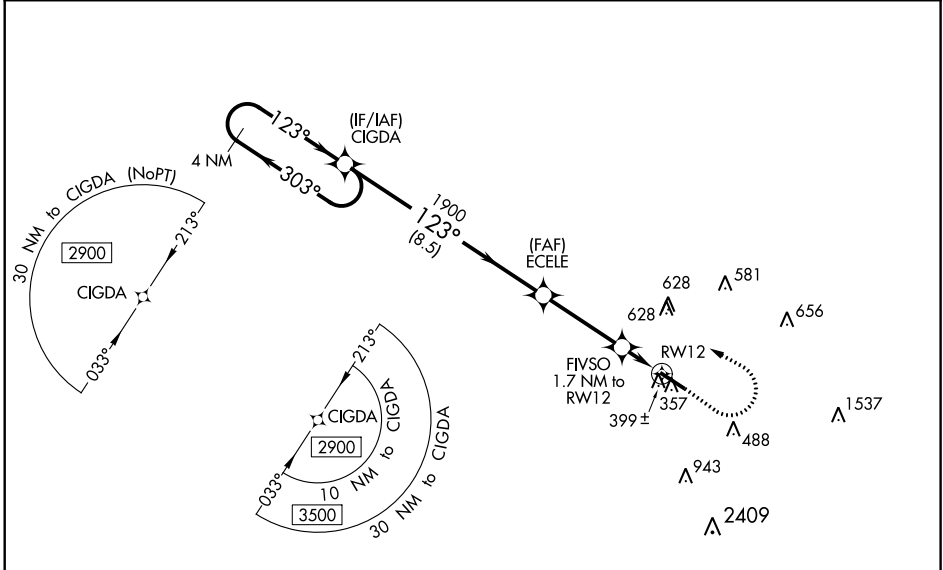
RNAV (GPS) RWY 12

JOHN BELL WILLIAMS (JVW)

⚠ For uncompensated Baro-VNAV systems, LNAV/VNAV NA below -15°C (5°F) or above 54°C (130°F). DME/DME RNP-0.3 NA. Circling NA for Cat D southwest of Rwy 12-30. Baro-VNAV and VDP NA when using Hawkins Fld altimeter setting. Helicopter visibility reduction below ¼ SM NA. When local altimeter setting not received, use Hawkins Fld altimeter setting: increase all DA 36 feet, all MDA 40 feet, all LNAV/VNAV visibilities ½ mile, LNAV Cat C and D visibilities ¼ mile, and Circling Cat C and D visibility ¼ mile.

MISSED APPROACH: Climb to 800 then climbing left turn to 2900 direct CIGDA and hold.

AWOS-3PT 118.675	JACKSON APP CON* 125.25 319.2	UNICOM 123.0 (CTAF) 0
----------------------------	---	---------------------------------



SC-4, 09 SEP 2021 to 07 OCT 2021

SC-4, 09 SEP 2021 to 07 OCT 2021

	ELEV 247		TDZE 241	
	VGSI and RNAV glidepath not coincident (VGSI Angle 3.00/TCH 38).			
	4 NM Holding Pattern	CIGDA	ECELE	FIVSO 1.7 NM to RW12
	2900 ← 303°	123° →	1900	*820
	GP 3.00°		123°	
	TCH 47		1900	
		8.5 NM	3.4 NM	0.5
				1.2
				*LNAV only
CATEGORY	A	B	C	D
LPV DA		441-¾	200 (200-¾)	
LNAV/VNAV DA		662-1⅜	421 (500-1⅜)	
LNAV MDA	660-1	419 (500-1)	660-1⅛	419 (500-1⅛)
C CIRCLING	800-1	553 (600-1)	980-2 733 (800-2)	980-2¼ 733 (800-2¼)

