

WAAS CH 78034 W30A	APP CRS 304°	Rwy Idg 5499 TDZE 247 Apt Elev 247
--	------------------------	--

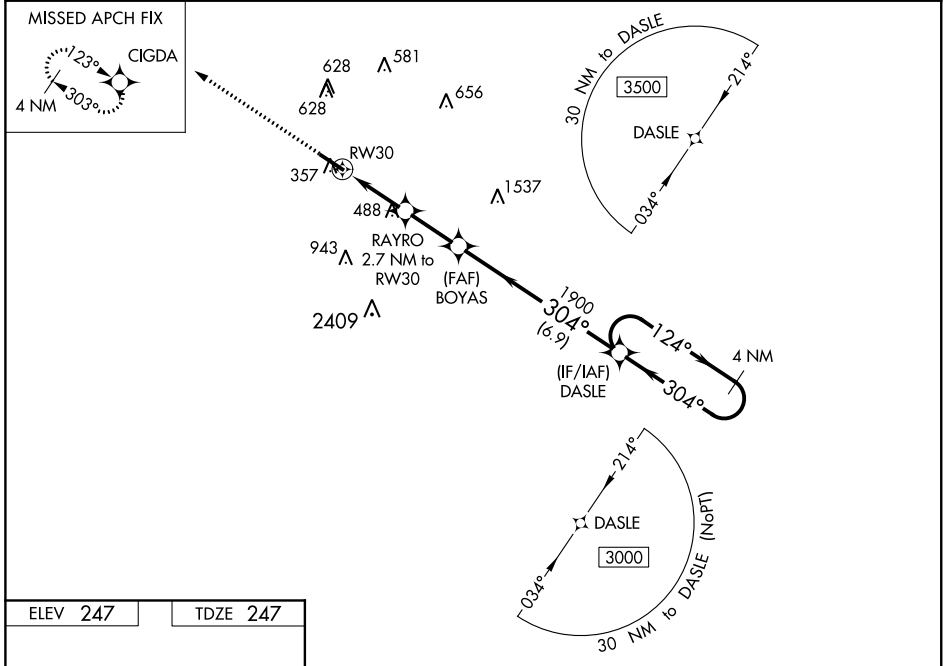
RNAV (GPS) RWY 30

JOHN BELL WILLIAMS (JVW)

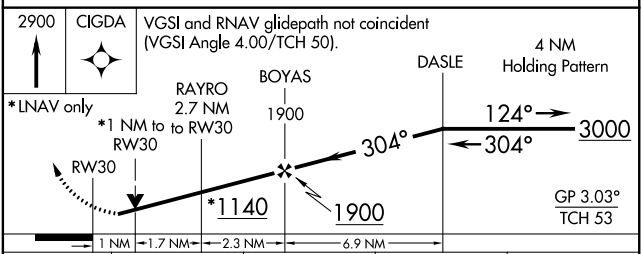
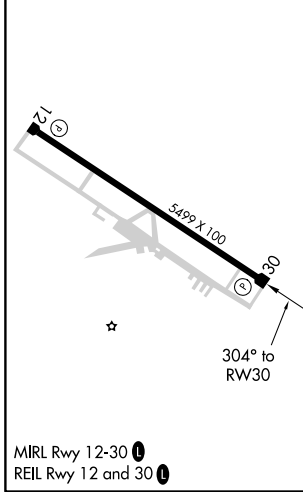
⚠ For uncompensated Baro-VNAV systems, LNAV/VNAV NA below -15°C (5°F) or above 54°C (130°F). DME/DME RNP-0.3 NA. Circling NA for Cat D southwest of Rwy 12-30. Helicopter visibility reduction below 3/4 SM NA. When local altimeter setting not received, use Hawkins Fld altimeter setting increase all DA/MDA 40 feet, increase LPV and LNAV/VNAV all Cats visibility and LNAV Cat C/D visibility 1/8 mile, increase Circling Cat C visibility 1/4 mile. Baro-VNAV and VDP NA when using Hawkins Fld altimeter setting.

MISSED APPROACH:
Climb to 2900 direct CIGDA and hold.

AWOS-3PT 118,675	JACKSON APP CON* 125,25 319,2	UNICOM 123,0 (CTAF) 0
----------------------------	---	---------------------------------



ELEV 247	TDZE 247
----------	----------



CATEGORY	A	B	C	D
LPV DA		513-7/8	266 (300-7/8)	
LNAV/VNAV DA		699-1 1/2	452 (500-1 1/2)	
LNAV MDA	740-1	493 (500-1)	740-1 3/8	493 (500-1 3/8)
C CIRCLING	740-1 493 (500-1)	760-1 513 (600-1)	980-2 733 (800-2)	980-2 1/4 733 (800-2 1/4)

SC-4, 09 SEP 2021 to 07 OCT 2021

SC-4, 09 SEP 2021 to 07 OCT 2021