

| | | |
|--|------------------------|---|
| WAAS CH 53535 W18A | APP CRS 182° | Rwy Idg 3197 TDZE 337 Apt Elev 337 |
|--|------------------------|---|

RNAV (GPS) RWY 18

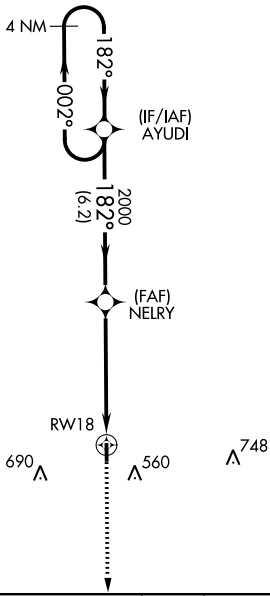
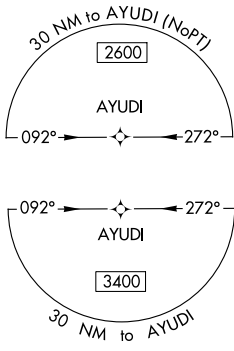
OKOLONA MUNI-RICHARD STOVALL FIELD (5A4)

⚠ Baro-VNAV NA. DME/DME RNP-0.3 NA. Use Tupelo altimeter setting; when not received, use Columbus Air Force Base altimeter setting and increase all DA 41 feet and all MDA 60 feet, increase LPV and LNAV/VNAV all Cats visibility 1/8 mile, LNAV Cat C visibility 1/2 mile. Rwy 18 helicopter visibility reduction below 3/4 SM NA.

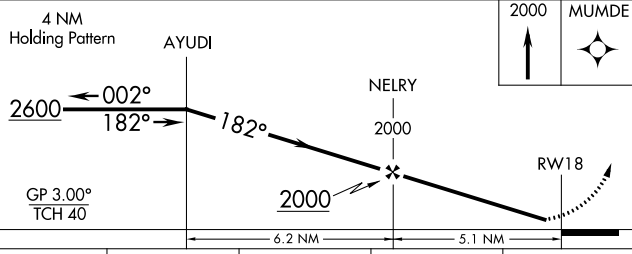
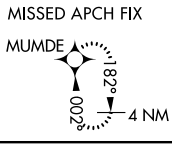
MISSED APPROACH:
Climb to 2000 direct MUMDE and hold.

COLUMBUS APP CON ★
126.075 229.15

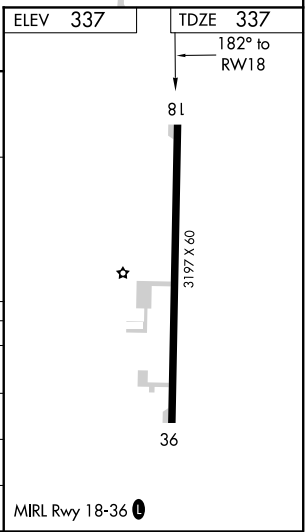
CTAF
122.9 0



980



| CATEGORY | A | B | C | D |
|-------------------|-----------------------|----------------------------|---|----|
| LPV DA | 624-1 287 (300-1) | | | NA |
| LNAV/VNAV DA | 669-1 332 (400-1 1/8) | | | NA |
| LNAV MDA | 820-1 483 (500-1) | 820-1 3/8 483 (500-1 3/8) | | NA |
| C CIRCLING | 920-1 583 (600-1) | 1080-2 1/4 743 (800-2 1/4) | | NA |



MIRL Rwy 18-36 0

SC-4, 09 SEP 2021 to 07 OCT 2021

SC-4, 09 SEP 2021 to 07 OCT 2021