

WAAS CH <b>70437</b> <b>W28A</b>	APP CRS <b>276°</b>	Rwy Idg TDZE Apt Elev	<b>5002</b> <b>3142</b> <b>3178</b>
--	------------------------	-----------------------------	---

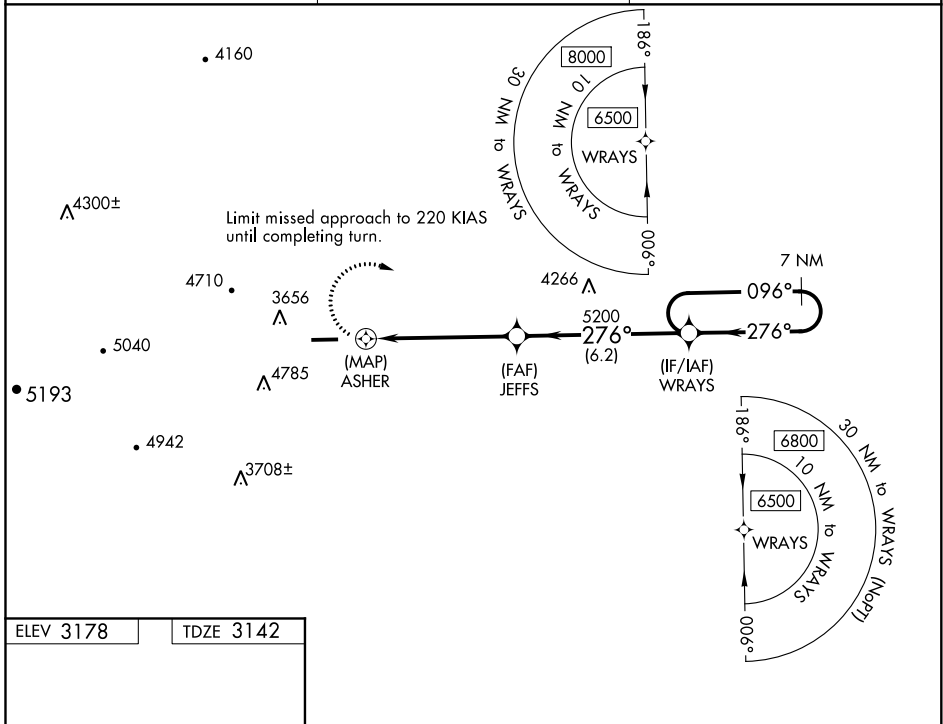
# RNAV (GPS) RWY 28

ASHE COUNTY (GEV)

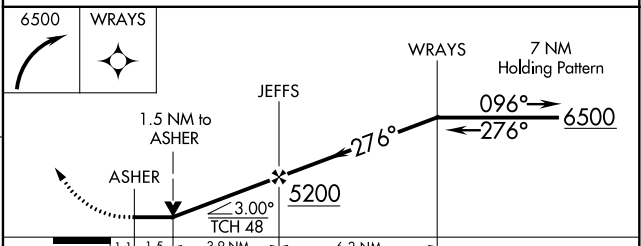
⚠ Circling Rwy 10 NA at night. Circling NA for Cat D north of Rwy 10-28. DME/DME RNP-0.3 NA. Rwy 28 helicopter visibility reduction below 3/4 SM NA. VDP NA when using Marion/Wytheville altimeter setting. When local altimeter setting not received, use Marion/Wytheville altimeter setting and increase all MDA 160 feet and LP and LNAV Cat B visibility 1/4 mile and LP and LNAV Cats C/D visibility 1/2 mile. Cats C/D Circling NA when using Marion/Wytheville altimeter setting.

⚠ MISSED APPROACH: Climbing right turn to 6500 direct WRAYS and hold.

AWOS-3 <b>120.675</b>	ATLANTA CENTER <b>125.15 263.0</b>	UNICOM <b>122.8 (CTAF) ①</b>
--------------------------	---------------------------------------	---------------------------------



ELEV 3178	TDZE 3142
REIL Rwy 28 ①	MIRL Rwy 10-28 ①



CATEGORY	A	B	C	D
LP MDA	3960-1¼	818 (800-1¼)	3960-2½	818 (800-2½)
LNAV MDA	4060-1¼	918 (900-1¼)	4060-2½	918 (900-2½)
<b>C</b> CIRCLING	4240-1¼ 1062 (1100-1¼)	4240-1½ 1062 (1100-1½)	5140-3	1962 (2000-3)

SE-2, 09 SEP 2021 to 07 OCT 2021

SE-2, 09 SEP 2021 to 07 OCT 2021