

APP CRS	Rwy Idg	2500
051°	TDZE	1209
	Apt Elev	1209

RNAV (GPS) RWY 4

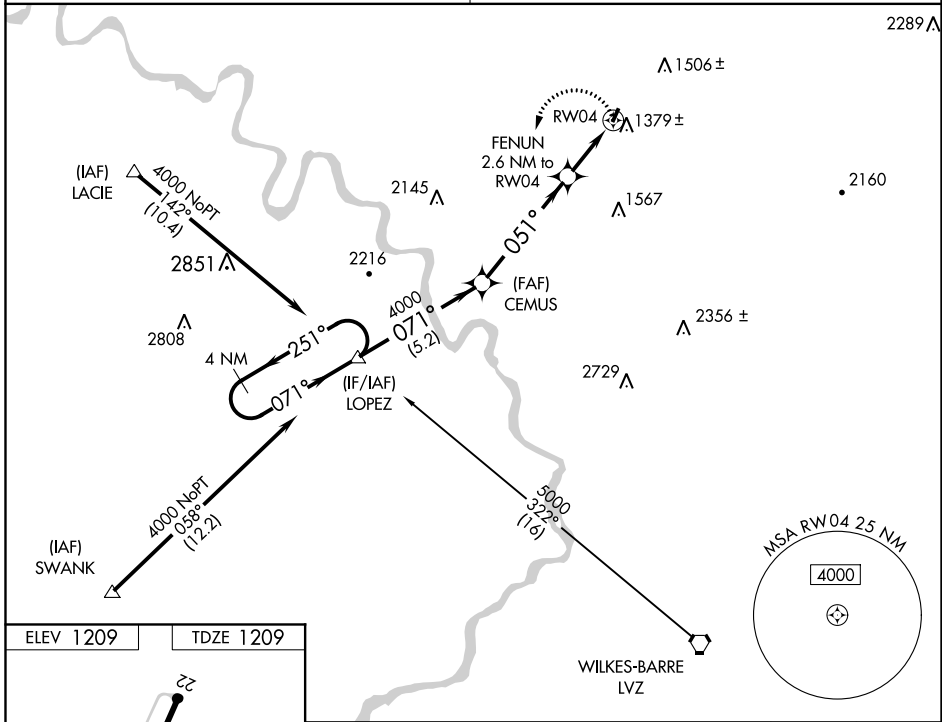
SEAMANS FIELD (9N3)

▼ DME/DME RNP-0.3 NA.
 Obtain local altimeter setting on CTAF; when not received, use Wilkes-Barre/Scranton Intl altimeter setting.
▲ NA
❄ -22°C VDP NA when using Wilkes-Barre/Scranton Intl altimeter setting.

MISSED APPROACH: Climbing left turn to 4000 direct LOPEZ and hold.

WILKES-BARRE APP CON
120.95 256.7

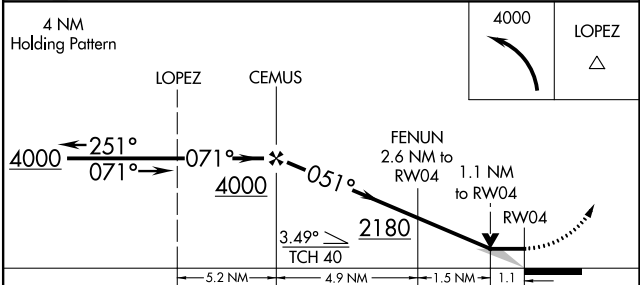
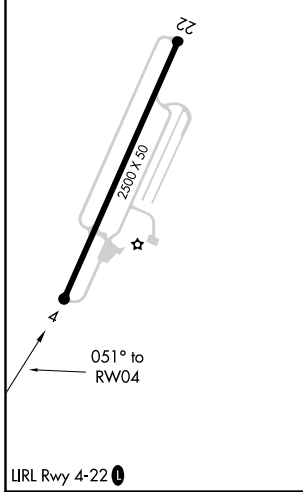
UNICOM
122.7 (CTAF) 0



NE-4, 09 SEP 2021 to 07 OCT 2021

NE-4, 09 SEP 2021 to 07 OCT 2021

ELEV 1209	TDZE 1209
-----------	-----------



CATEGORY	A	B	C	D
RNAV MDA	1640-1	431 (500-1)		NA
CIRCLING	1720-1	511 (600-1)		NA
WILKES-BARRE/SCRANTON INTL ALTIMETER SETTING MINIMUMS				
RNAV MDA	1720-1	511 (600-1)		NA
CIRCLING	1800-1	591 (600-1)		NA