

| | | | |
|--|------------------------|-----------------------------|---|
| WAAS CH 61140 W35A | APP CRS 354° | Rwy Idg TDZE Apt Elev | 5103 1003 1003 |
|--|------------------------|-----------------------------|---|

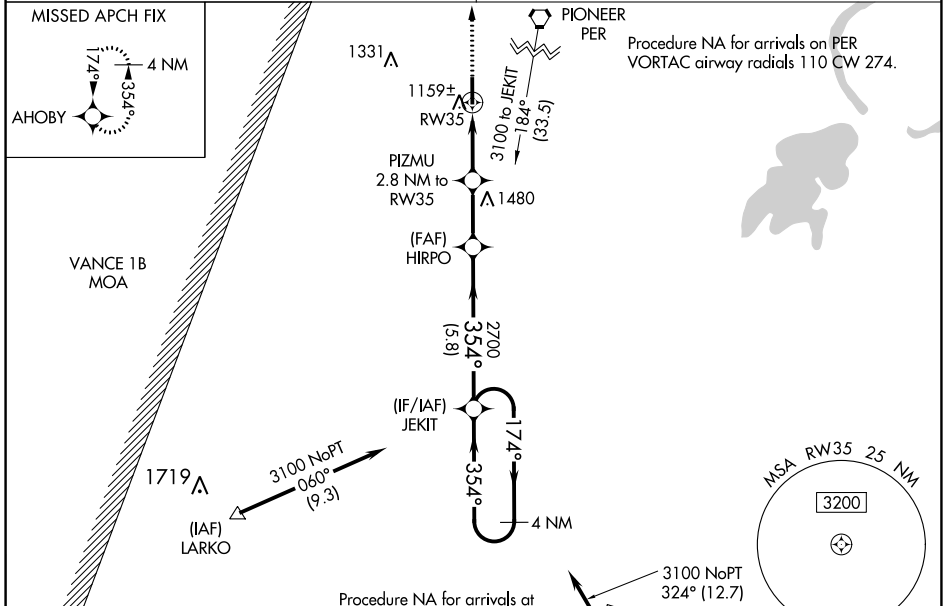
RNAV (GPS) RWY 35

PERRY MUNI (F22)

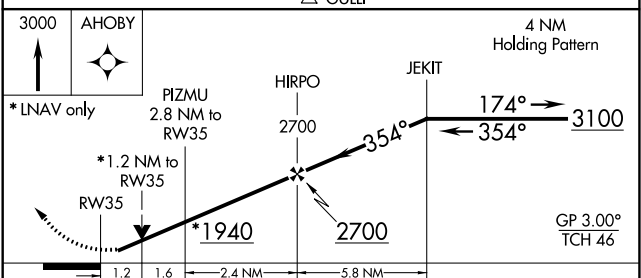
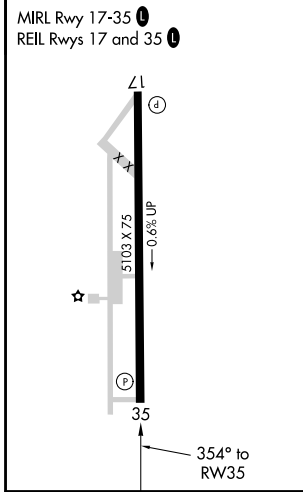
NA For uncompensated Baro-VNAV systems, procedure NA below -16°C (4°F) or above 54°C (130°F). DME/DME RNP-0.3 NA. Baro-VNAV and VDP NA when using Ponca City altimeter setting. Rwy 35 helicopter visibility reduction below 3/4 SM NA. Obtain local altimeter setting on CTAF; when not received, use Ponca City altimeter setting and increase all DA 53 feet and all visibility 1/8 SM, increase all MDAs 60 feet and Cat C visibility 1/4 SM.

MISSED APPROACH: Climb to 3000 direct AHOBY and hold.

KANSAS CITY CENTER **127.8 319.1** UNICOM **122.8 (CTAF)**



| | |
|-----------|-----------|
| ELEV 1003 | TDZE 1003 |
|-----------|-----------|



| CATEGORY | A | B | C | D |
|-------------------|------------|-------------|-------------------------------|----|
| LPV DA | 1253-3/4 | | 250 (300-3/4) | NA |
| LNAV/VNAV DA | 1330-1 1/8 | | 327 (400-1 1/8) | NA |
| LNAV MDA | 1420-1 | 417 (500-1) | 1420-1 1/8 417 (500-1 1/8) | NA |
| C CIRCLING | 1480-1 | 477 (500-1) | 1620-1 3/4 617 (700-1 3/4) | NA |

SC-1, 09 SEP 2021 to 07 OCT 2021

SC-1, 09 SEP 2021 to 07 OCT 2021